

AYLIK RAPOR

Automotive Industry Monthly Report

Temmuz / July 2014

- **Üretim**/Production
- **Satış**/Sales
- **İthalat**/Imports
- **İhracat**/Exports

2014 Temmuz Ayı Özeti / 2014 July Summary

KONULAR/ MATTERS		TEMMUZ / JULY			7 AY/ 7 MONTHS			SON 12 AYLIK / YoY		
		2013	2014	2014/2013 (%)	2013	2014	2014/2013 (%)	2013	2014	2014/2013 (%)
Üretim/ Production	Toplam/ Total	111.992	98.154	-12	681.339	662.232	-3	1.096.771	1.008.273	-8
	Otomobil/ P.Cars	65.411	61.151	-7	369.194	422.042	14	593.748	621.457	5
Pazar/ Market	Toplam/ Total	74.726	62.192	-17	475.692	367.340	-23	868.572	722.507	-17
	Otomobil/ P.Cars	55.712	46.602	-16	347.818	272.375	-22	615.077	542.610	-12
İthalat/ Import	Toplam/ Total	51.739	41.416	-20	327.356	245.416	-25	576.750	492.767	-15
	Otomobil/ P.Cars	43.246	34.780	-20	271.666	203.629	-25	515.881	445.532	-14
İhracat/ Export	Toplam/ Total	80.916	79.687	-2	501.773	532.033	6	782.313	779.290	0
	Otomobil/ P.Cars	47.491	53.125	12	280.523	352.660	26	444.716	500.137	12
İhracat / Export (\$)	Toplam/ Total **	1.989.853.488	2.041.455.754	3	12.621.180.648	13.980.360.505	11	20.440.569.694	20.885.106.413	2
	Otomobil/ P.Cars	697.478.302	712.900.161	2	4.201.211.431	4.603.940.054	10	6.567.325.044	6.550.650.820	0

PARAMETRELER / PARAMETERS		TEMMUZ / JULY			7 AY/ 7 MONTHS			SON 12 AYLIK / YoY		
		2013	2014	2014/2013 (%)	2013	2014	2014/2013 (%)	2013	2014	2014/2013 (%)
ÜFE/ PPI		0,99	0,73	**	3,48	9,50	**	6,61	9,46	**
TÜFE/ CPI		0,31	0,45	**	4,32	9,30	**	8,88	9,32	**
Sanayi Endeksi/ Industry Index		1,16	0,67	**	3,96	7,12	**	5,16	11,75	**
\$ (*)		1,9228	2,1380	11	1,8557	1,8551	0	1,8308	1,9323	6
EURO (*)		2,5521	2,8540	12	2,4221	2,5407	5	2,3799	2,6350	11
Japon Yeni (*)		1,9512	20,6130	956	1,9193	1,8179	-5	2,0455	1,9033	-7

(*) Ortalama Değerler / Average Values

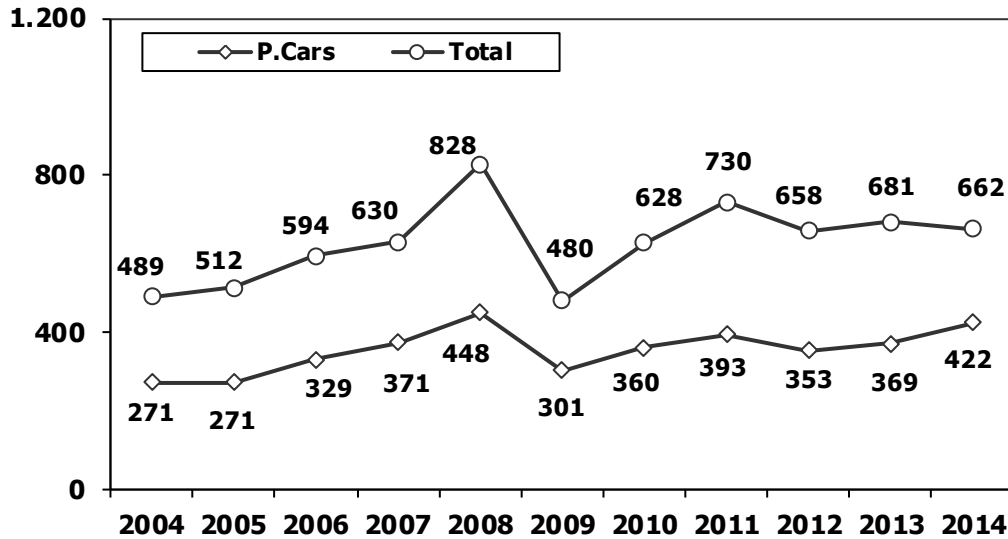
(**) Toplam Sanayi / Total Industry Including Components

2013/2014 Yılları Üretim 2013/2014 Production

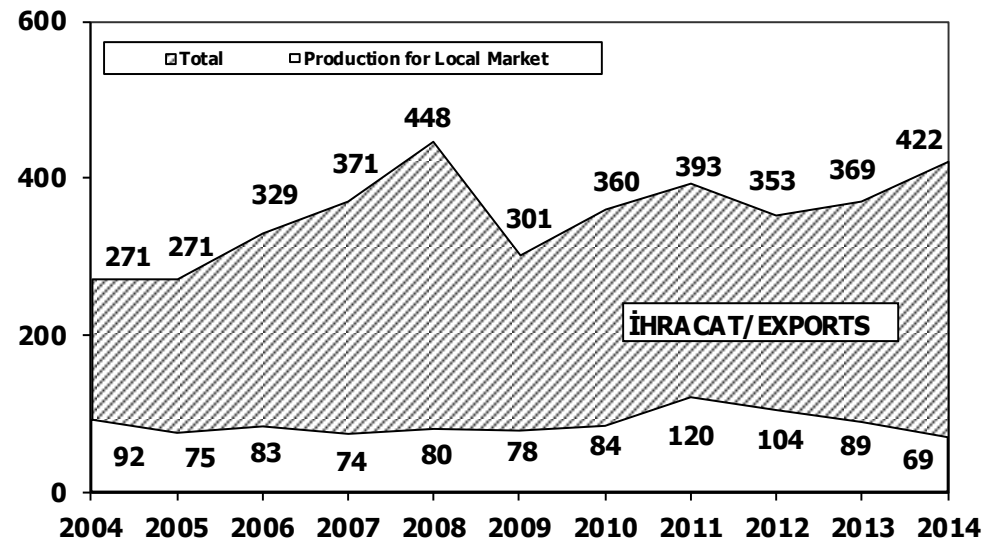
K.KAMYON : AYA 3.5-12 Ton (L.Truck:GVW 3.5-12 Ton)
B.KAMYON : AYA 12 Ton' dan Büyük (M.Truck:GVW 12 Ton And Up)

TİPLER	TEMMUZ AYI ÜRETİMİ July Production		7 AYLIK ÜRETİM 7 Months Production		DEĞİŞİM % Percent Change %	
	2013	2014	2013	2014	TEMMUZ	7 AY 7 Months
OTOMOBİL - Pass.Car	65.411	61.151	369.194	422.042	-7	14
TİCARİ ARAÇLAR - Commercial Vehicles	46.581	37.003	312.145	240.190	-21	-23
* B. KAMYON - M. Truck	2.332	2.136	15.268	14.751	-8	-3
* K. KAMYON - L. Truck	289	167	2.339	1.825	-42	-22
* KAMYONET - Pick Up	39.002	30.727	263.159	197.851	-21	-25
* OTOBÜS - Bus	787	548	5.483	3.912	-30	-29
* MİNİBÜS - Minibus	3.757	3.157	22.883	18.423	-16	-19
* MİDİBÜS - Midibus	414	268	3.013	3.428	-35	14
TAŞIT ARAÇLARI TOPLAM - MV Total	111.992	98.154	681.339	662.232	-12	-3
TRAKTÖR - F.Tractor	3.756	4.003	24.032	28.679	7	19
GENEL TOPLAM - Grand Total	115.748	102.157	705.371	690.911	-12	-2

Toplam Üretim ve Otomobil Üretimi (x1000) (Ocak-Temmuz)
Total & P.Cars Production (x1000) (January- July)



Otomobil Üretimi ve İhracat (x1000) (Ocak-Temmuz)
P.Cars Production & Exports (x1000) (January- July)



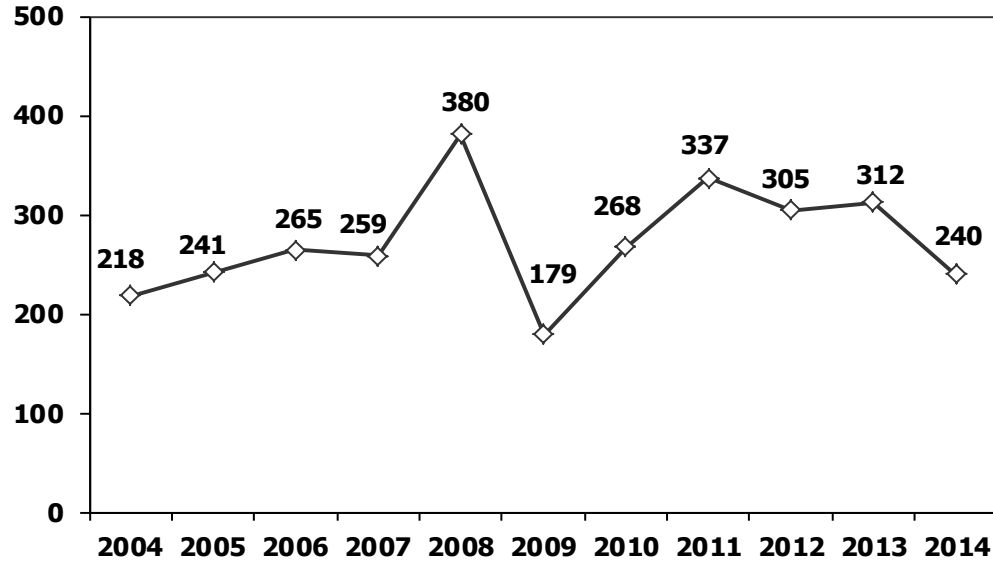
7 Aylık Üretim (7 Months Production)

FİRMALAR Companies	OTOMOBİL Pass.Car	%	K.KAMYON L.Truck	%	B.KAMYON Mid.Truck	%	KAMYONET Pick Up	%	OTOBÜS Bus	%	MİNİBÜS Mini-Bus	%	MİDİBÜS Midi-Bus	%	TRAKTÖR F.Tractor	%	TOPLAM Totals
A.I.O.S.	0	0	1.588	87	0	0	1.108	1	54	1	0	0	1.120	33	0	0	3.870
FORD OTOSAN	5.540	1	0	0	3.998	27	103.439	52	0	0	17.667	96	0	0	0	0	130.644
HATTAT TARIM	0	0	0	0	0	0	0	0	0	0	0	0	0	0	1.586	6	1.586
HONDA TÜRKİYE	7.975	2	0	0	0	0	0	0	0	0	0	0	0	0	0	0	7.975
HYUNDAI ASSAN	115.619	27	0	0	0	0	0	0	0	0	0	0	0	0	0	0	115.619
KARSAN	0	0	0	0	0	0	5	0	43	1	745	4	39	1	0	0	832
M. BENZ TÜRK	0	0	0	0	10.753	73	0	0	2.144	55	0	0	0	0	0	0	12.897
MANTÜRKİYE	0	0	0	0	0	0	0	0	616	16	0	0	0	0	0	0	616
OTOKAR	0	0	237	13	0	0	191	0	262	7	11	0	1.351	39	0	0	2.052
OYAK RENAULT	179.710	43	0	0	0	0	0	0	0	0	0	0	0	0	0	0	179.710
TEMSA GLOBAL	0	0	0	0	0	0	0	0	793	20	0	0	918	27	0	0	1.711
TOFAŞ	33.685	8	0	0	0	0	93.108	47	0	0	0	0	0	0	0	0	126.793
TOYOTA	79.513	19	0	0	0	0	0	0	0	0	0	0	0	0	0	0	79.513
TÜRK TRAKTÖR	0	0	0	0	0	0	0	0	0	0	0	0	0	0	27.093	94	27.093
TOPLAM	422.042	100	1.825	100	14.751	100	197.851	100	3.912	100	18.423	100	3.428	100	28.679	100	690.911

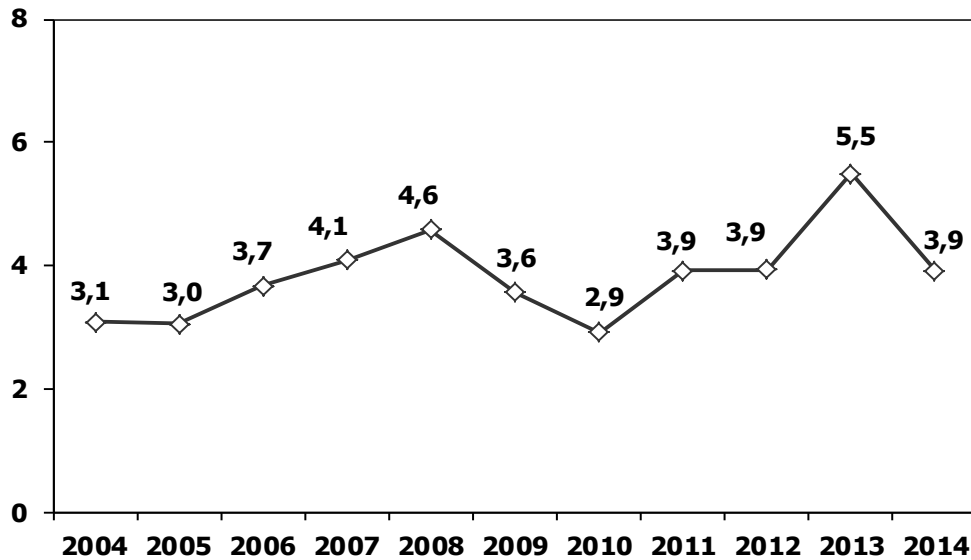
Temmuz Ayı Üretimi (July Production)

FİRMALAR Companies	OTOMOBİL Pass.Car	%	K.KAMYON L.Truck	%	B.KAMYON Mid.Truck	%	KAMYONET Pick Up	%	OTOBÜS Bus	%	MİNİBÜS Mini-Bus	%	MİDİBÜS Midi-Bus	%	TRAKTÖR F.Tractor	%	TOPLAM Totals
A.I.O.S.	0	0	146	87	0	0	173	1	14	3	0	0	81	30	0	0	414
FORD OTOSAN	1.696	3	0	0	628	29	15.786	51	0	0	2.946	93	0	0	0	0	21.056
HATTAT	0	0	0	0	0	0	0	0	0	0	0	0	0	0	193	5	193
HONDA TÜRKİYE	882	1	0	0	0	0	0	0	0	0	0	0	0	0	0	0	882
HYUNDAI ASSAN	17.319	28	0	0	0	0	0	0	0	0	0	0	0	0	0	0	17.319
KARSAN	0	0	0	0	0	0	0	0	0	0	211	7	26	10	0	0	237
M. BENZ TÜRK	0	0	0	0	1.508	71	0	0	330	60	0	0	0	0	0	0	1.838
MANTÜRKİYE	0	0	0	0	0	0	0	0	92	17	0	0	0	0	0	0	92
OTOKAR	0	0	21	13	0	0	20	0	37	7	0	0	76	28	0	0	154
OYAK RENAULT	25.720	42	0	0	0	0	0	0	0	0	0	0	0	0	0	0	25.720
TEMSA	0	0	0	0	0	0	0	0	75	14	0	0	85	32	0	0	160
TOFAŞ	5.071	8	0	0	0	0	14.748	48	0	0	0	0	0	0	0	0	19.819
TOYOTA	10.463	17	0	0	0	0	0	0	0	0	0	0	0	0	0	0	10.463
TÜRK TRAKTÖR	0	0	0	0	0	0	0	0	0	0	0	0	0	0	3.810	95	3.810
TOPLAM	61.151	100	167	100	2.136	100	30.727	100	548	100	3.157	100	268	100	4.003	100	102.157

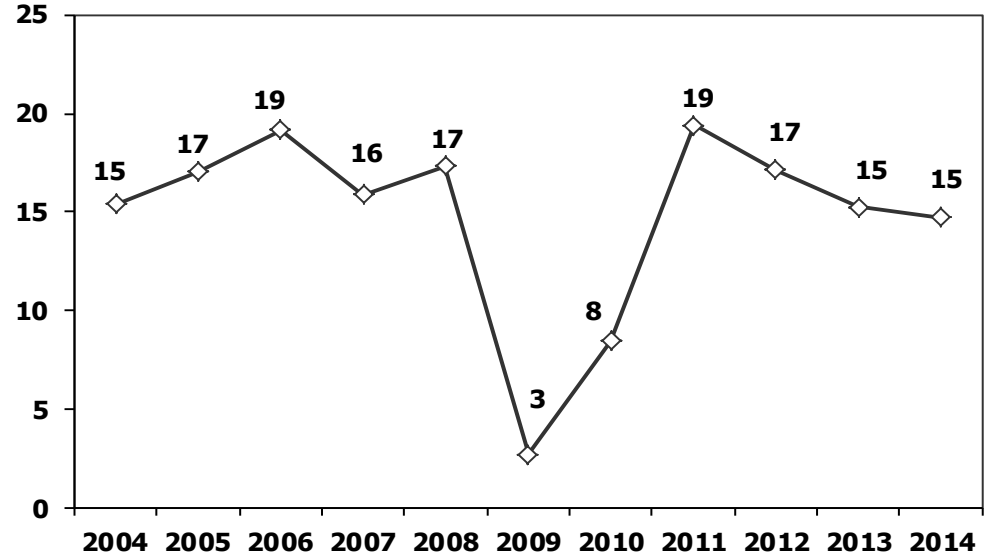
Ticari Araç Üretimi (x1000) (Ocak-Temmuz)
Commercial Vehicle Production (x1000) (January- July)



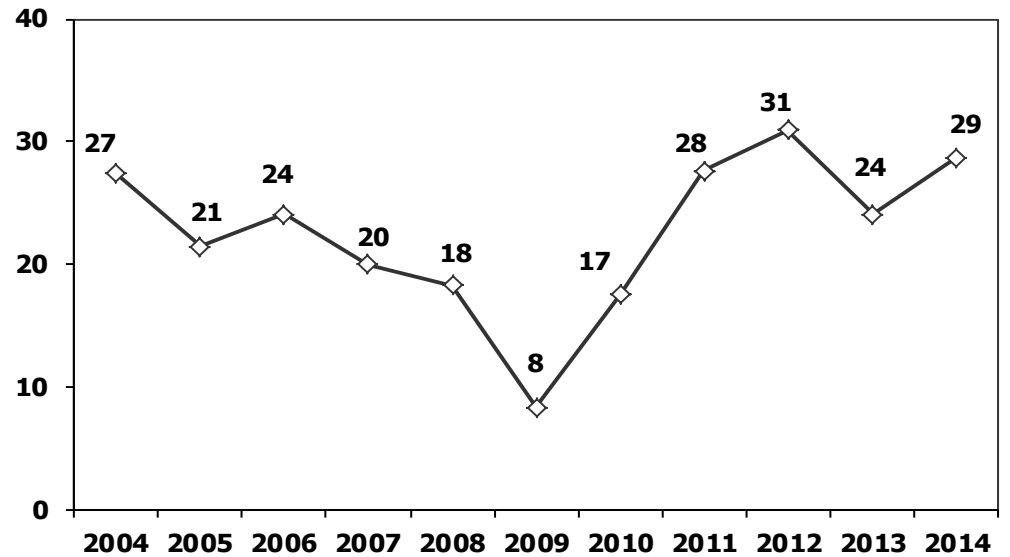
Otobüs Üretimi (x1000) (Ocak-Temmuz)
Bus Production (x1000) (January- July)



(AYA >12 Ton) **Büyük Kamyon Üretimi** (x1000) (Ocak-Temmuz)
(GVW >12 Ton) Heavy Truck Production (x1000) (January- July)

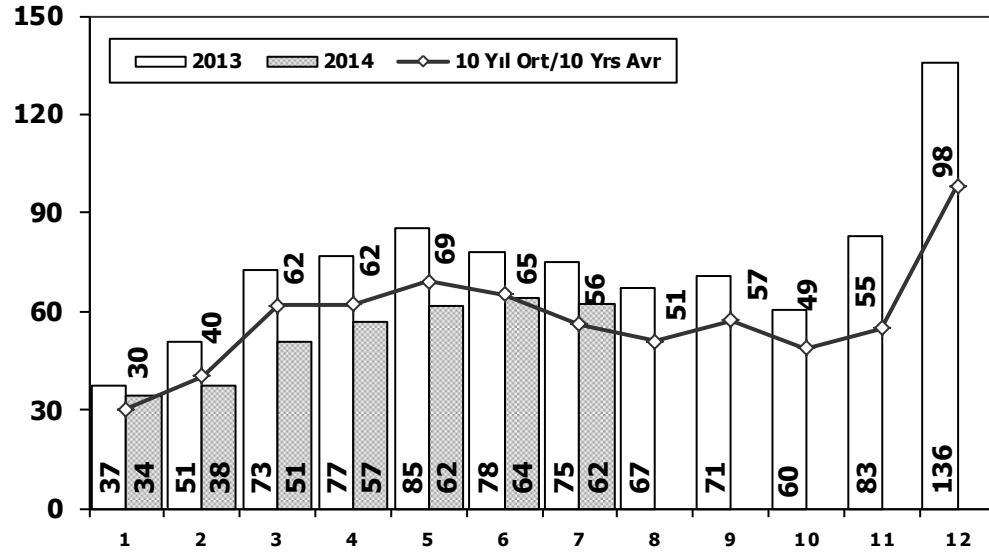


Traktör Üretimi (x1000) (Ocak-Temmuz)
F. Tractor Production (x1000) (January- July)



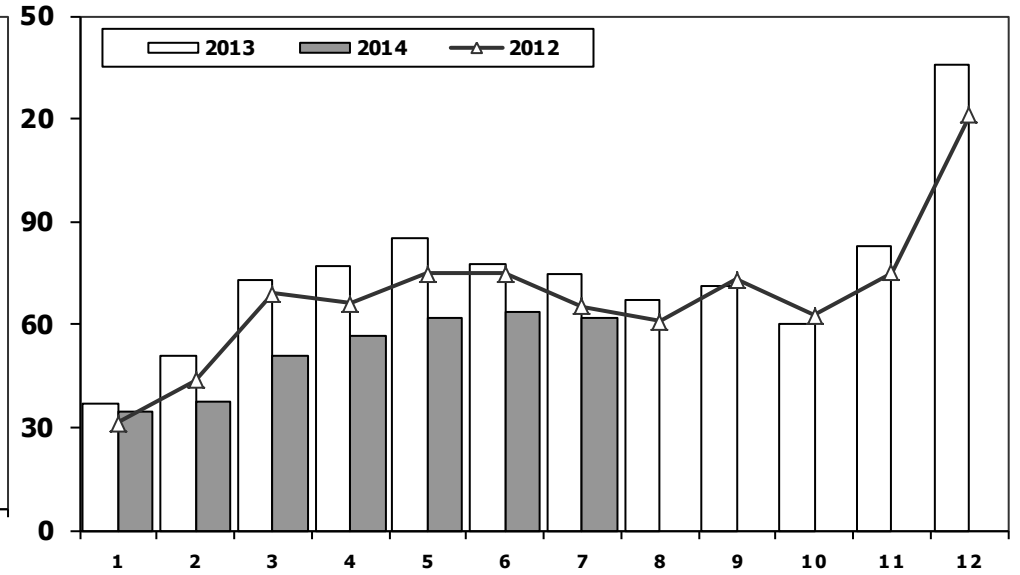
Toplam Pazarın Analizi (x1000)

Total Market Analysis (x1000)



Toplam Pazar (x1000)

Total Market (x1000)

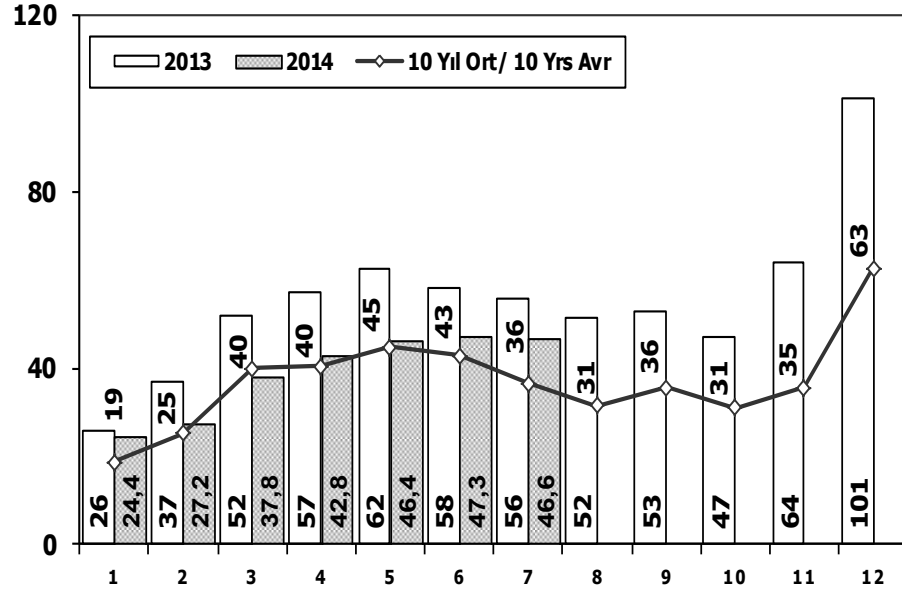


Aylar / Months	10 Yıl Ort. 10 Yrs Avr. (x1000)	2014 (x1000)	%
1	30,3	34,3	13,2
2	40,3	37,5	-6,8
3	61,8	50,8	-17,8
4	62,0	56,7	-8,4
5	69,1	61,9	-10,5
6	65,2	63,9	-2,1
7	56,0	62,2	11,0
Total	384,7	367,3	-4,5

	1	2	3	4	5	6	7	8	9	10	11	12	7 Ay/Mo	Total
2004	38.621	39.389	71.723	77.056	84.634	63.228	57.307	56.422	59.429	56.153	52.237	85.070	431.958	741.269
2005	22.687	38.291	64.502	60.873	71.383	64.379	63.847	68.647	66.580	60.791	65.719	110.838	385.962	758.537
2006	29.969	44.646	65.090	68.853	83.289	58.203	40.037	47.374	49.629	39.805	55.898	82.722	390.087	665.515
2007	24.950	31.702	45.488	45.633	51.255	51.661	50.117	54.171	50.078	56.058	67.017	106.076	300.806	634.206
2008	33.792	38.121	56.814	50.967	51.627	49.393	44.692	46.592	46.829	35.147	28.152	44.418	325.406	526.544
2009	20.631	22.846	56.531	54.426	64.887	63.102	30.246	37.092	83.403	22.117	29.202	91.386	312.669	575.869
2010	21.050	32.313	53.828	57.079	61.628	63.390	63.718	64.645	66.601	76.780	77.406	154.734	353.006	793.172
2011	47.658	62.348	83.333	82.071	85.093	85.863	65.364	61.378	63.643	72.640	67.195	134.281	511.730	910.867
2012	31.219	43.827	68.957	66.014	74.820	74.781	65.122	60.848	73.197	62.677	75.045	121.113	424.740	817.620
2013	37.140	50.931	72.688	77.015	85.421	77.771	74.726	67.383	71.037	60.399	83.017	135.596	475.692	893.124
2014	34.338	37.519	50.781	56.746	61.865	63.899	62.192	0	0	0	0	0	367.340	367.340

Otomobil Pazarının Analizi (x1000)

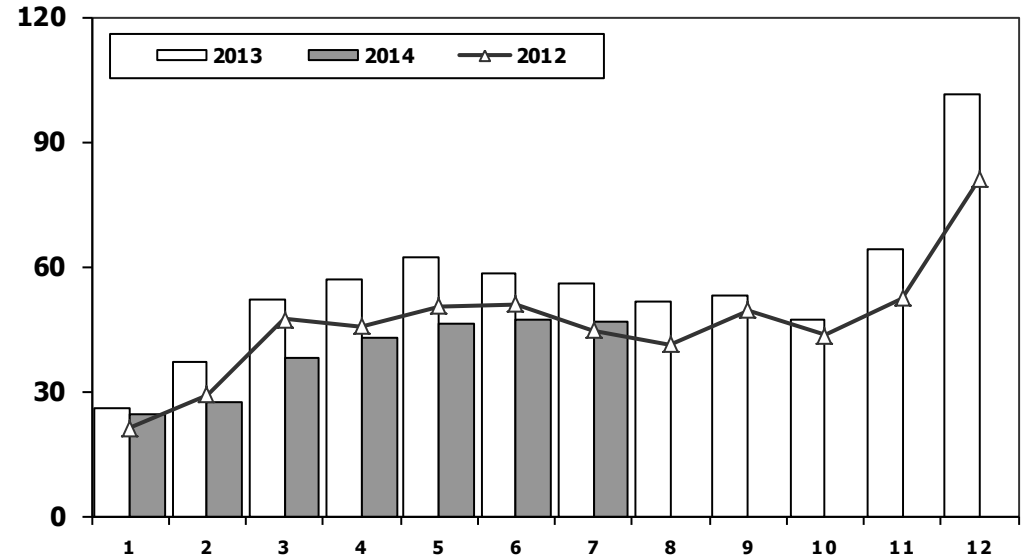
P.Cars Market Analysis (x1000)



Aylar / Months	10 Yıl Ort. 10 Yrs Avr. (x1000)	2014 (x1000)	%
1	18,7	24,4	30,5
2	25,2	27,2	7,9
3	39,9	37,8	-5,3
4	40,4	42,8	5,9
5	44,8	46,4	3,6
6	42,9	47,3	10,2
7	36,4	46,6	28,1
Total	248,2	272,4	9,7

Otomobil Pazarı (x1000)

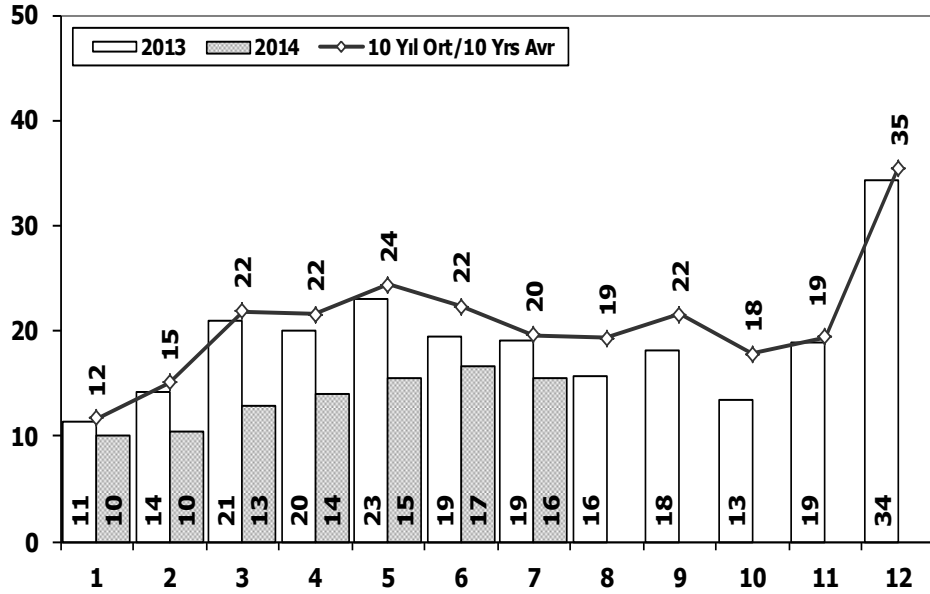
P.Cars Market (x1000)



	1	2	3	4	5	6	7	8	9	10	11	12	7 Ay/Mo	Total
2004	25.625	23.695	46.075	47.995	54.610	37.671	33.410	33.709	33.383	34.292	30.547	50.197	269.081	451.209
2005	11.595	21.012	38.129	36.206	38.480	40.900	38.969	38.648	36.410	34.960	37.841	65.447	225.291	438.597
2006	16.506	24.929	36.996	40.177	48.521	32.982	22.653	24.873	27.517	21.237	30.477	46.351	222.764	373.219
2007	13.186	17.212	24.336	25.204	29.067	30.126	28.246	28.469	27.662	32.569	39.643	61.745	167.377	357.465
2008	18.588	21.196	34.147	30.313	31.477	28.724	25.530	26.102	27.053	19.788	17.201	25.879	189.975	305.998
2009	13.173	14.492	40.622	36.202	44.188	41.019	16.637	22.537	52.162	13.828	17.781	57.178	206.333	369.819
2010	12.594	20.651	33.958	36.549	40.467	42.086	41.399	42.222	42.477	47.859	50.061	99.461	227.704	509.784
2011	29.868	39.004	54.023	53.835	56.302	56.714	43.518	38.875	39.964	47.508	44.951	88.957	333.264	593.519
2012	21.077	29.189	47.270	45.645	50.460	50.849	44.531	41.236	49.360	43.440	52.297	80.926	289.021	556.280
2013	25.835	36.814	51.785	56.999	62.383	58.290	55.712	51.611	52.925	46.985	64.117	101.199	347.818	664.655
2014	24.368	27.167	37.812	42.769	46.379	47.278	46.602	0	0	0	0	0	272.375	272.375

Ticari Araç Pazarının Analizi (x1000)

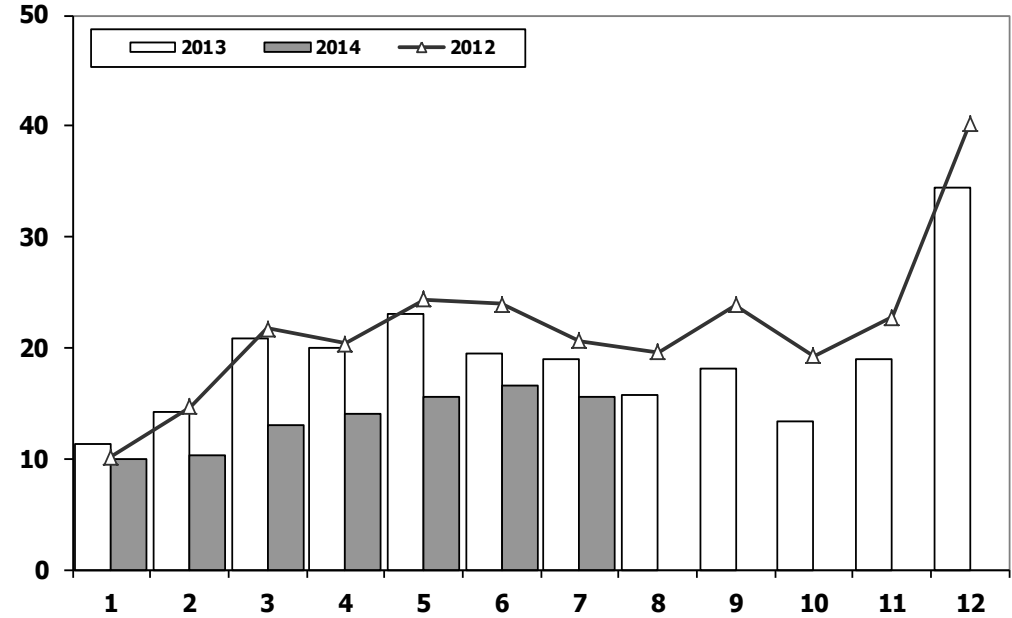
CV Market Analysis (x1000)



Aylar / Months	10 Yıl Ort. 10 Yrs Avr. (x1000)	2014 (x1000)	%
1	11,7	10,0	-14,5
2	15,1	10,4	-31,4
3	21,9	13,0	-40,8
4	21,6	14,0	-35,2
5	24,4	15,5	-36,4
6	22,3	16,6	-25,6
7	19,6	15,6	-20,6
Total	136,6	95,0	-30,5

Ticari Araç Pazarı (x1000)

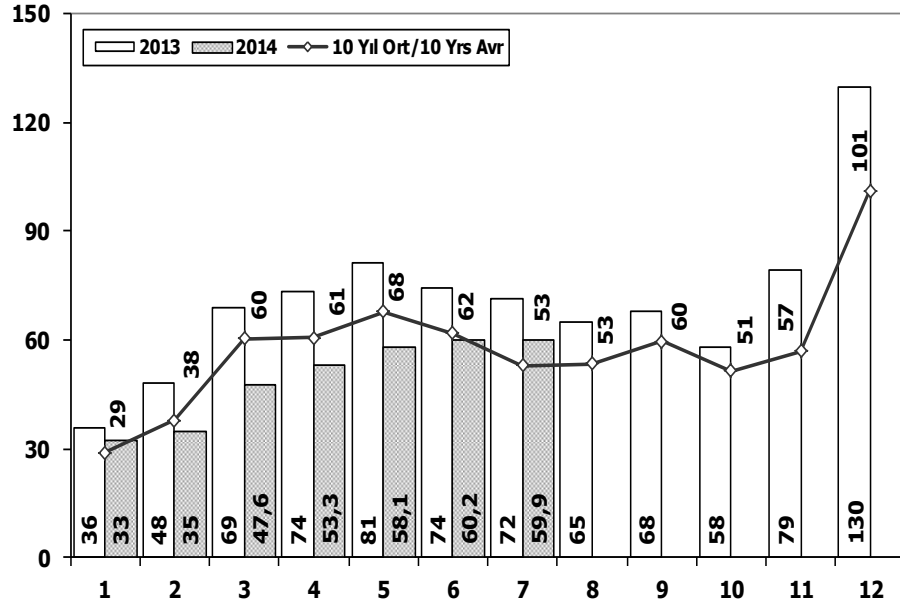
CV Total Market (Local + Imports) (x1000)



	1	2	3	4	5	6	7	8	9	10	11	12	7 Ay/Mo	Total
2004	12.996	15.694	25.648	29.061	30.024	25.557	23.897	22.713	26.046	21.861	21.690	34.873	162.877	290.060
2005	11.092	17.279	26.373	24.667	32.903	23.479	24.878	29.999	30.170	25.831	27.878	45.391	160.671	319.940
2006	13.463	19.717	28.094	28.676	34.768	25.221	17.384	22.501	22.112	18.568	25.421	36.371	167.323	292.296
2007	11.764	14.490	21.152	20.429	22.188	21.535	21.871	25.702	22.416	23.489	27.374	44.331	133.429	276.741
2008	15.204	16.925	22.667	20.654	20.150	20.669	19.162	20.490	19.776	15.359	10.951	18.539	135.431	220.546
2009	7.458	8.354	15.909	18.224	20.699	22.083	13.609	14.555	31.241	8.289	11.421	34.208	106.336	206.050
2010	8.456	11.662	19.870	20.530	21.161	21.304	22.319	22.423	24.124	28.921	27.345	55.273	125.302	283.388
2011	17.790	23.344	29.310	28.236	28.791	29.149	21.846	22.503	23.679	25.132	22.244	45.324	178.466	317.348
2012	10.142	14.638	21.687	20.369	24.360	23.932	20.591	19.612	23.837	19.237	22.748	40.187	135.719	261.340
2013	11.305	14.117	20.903	20.016	23.038	19.481	19.014	15.772	18.112	13.414	18.900	34.397	127.874	228.469
2014	9.970	10.352	12.969	13.977	15.486	16.621	15.590	0	0	0	0	0	94.965	94.965

Hafif Araç Pazarının Analizi (x1000)

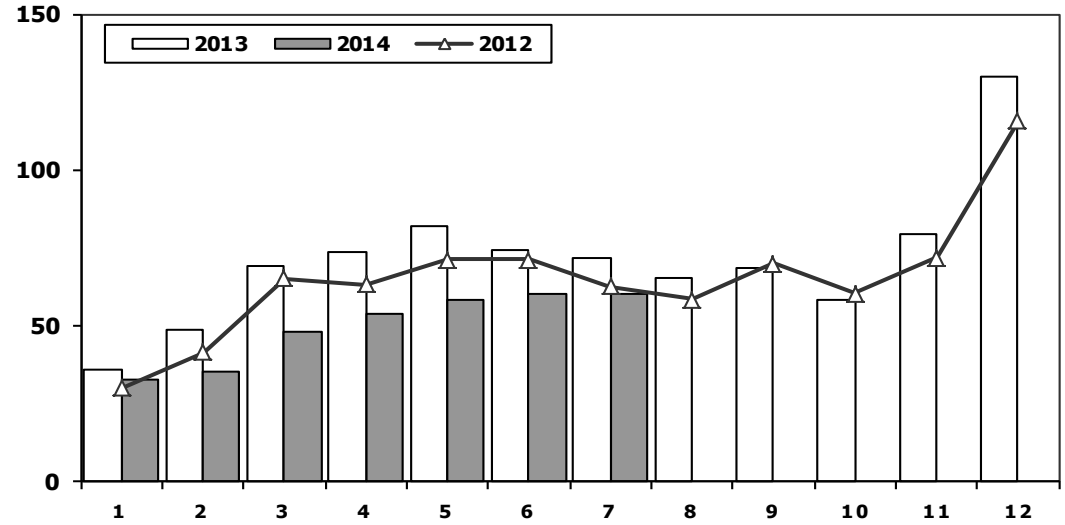
LV Market Analysis (x1000)



Aylar / Months	10 Yıl Ort. 10 Yrs Avr. (x1000)	2014 (x1000)	%
1	28,9	32,7	12,9
2	37,9	35,0	-7,7
3	60,2	47,6	-21,0
4	60,6	53,3	-12,0
5	67,8	58,1	-14,3
6	61,9	60,2	-2,7
7	53,0	59,9	13,1
Total	370,3	346,8	-6,4

Hafif Araç Pazarı (x1000)

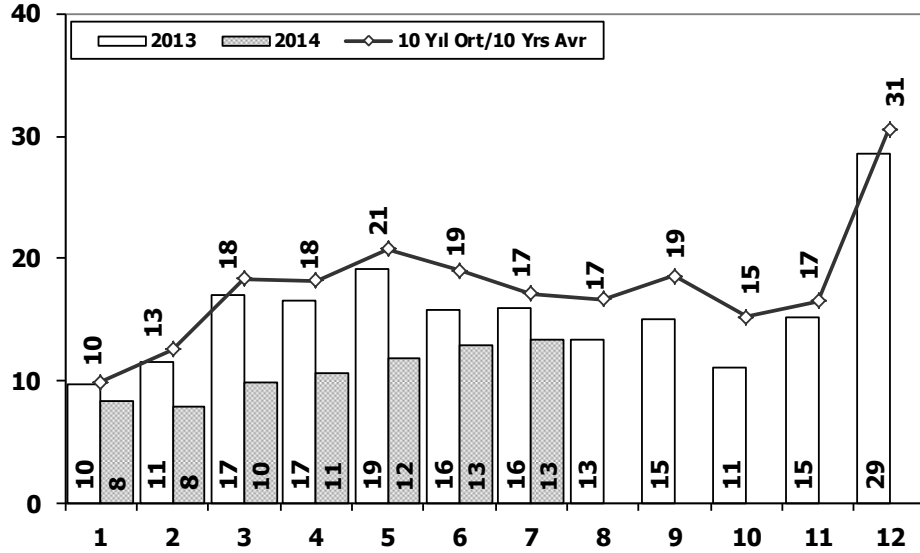
LV Total Market (Local + Imports) (x1000)



	1	2	3	4	5	6	7	8	9	10	11	12	7 Ay/Mo	Total
2004	36.352	37.079	67.144	73.075	80.290	59.730	54.816	52.876	55.609	53.000	49.200	78.924	408.486	698.095
2005	20.747	35.766	60.707	56.844	67.357	60.796	61.015	64.011	61.954	56.638	61.364	103.209	363.232	710.408
2006	27.917	40.938	60.052	64.038	78.229	54.355	37.251	43.767	46.109	36.542	51.867	76.787	362.780	617.852
2007	23.117	29.184	41.890	42.366	47.938	48.674	47.490	50.558	46.581	52.725	63.313	100.926	280.659	594.762
2008	31.527	35.251	53.649	47.701	48.598	46.324	42.156	43.670	43.932	32.884	26.253	42.078	305.206	494.023
2009	19.606	21.742	55.111	52.640	63.191	61.067	28.845	35.609	81.397	21.033	27.962	88.923	302.202	557.126
2010	20.095	31.172	51.769	54.946	59.377	60.896	61.345	61.764	63.814	73.404	73.962	148.369	339.600	760.913
2011	44.892	58.663	78.403	77.695	80.646	81.573	63.044	58.406	60.129	69.421	63.657	127.910	484.916	864.439
2012	29.545	41.324	64.884	62.949	70.863	71.067	62.304	58.148	69.629	59.938	71.710	115.400	402.936	777.761
2013	35.523	48.307	68.774	73.575	81.468	74.096	71.596	65.043	67.963	58.014	79.301	129.718	453.339	853.378
2014	32.670	35.021	47.581	53.305	58.121	60.163	59.907	0	0	0	0	0	346.768	346.768

Hafif Ticari Araç Pazarının Analizi (x1000)

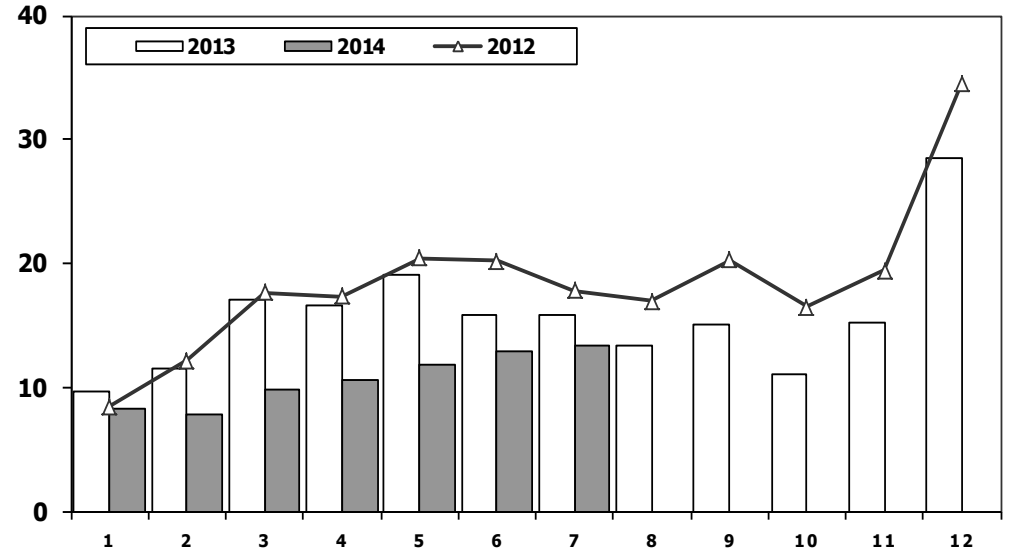
LCV Market Analysis (x1000)



Aylar / Months	10 Yıl Ort. 10 Yrs Avr. (x1000)	2013 (x1000)	%
1	9,9	8,3	-16,0
2	12,6	7,9	-37,5
3	18,4	9,8	-46,8
4	18,2	10,5	-42,2
5	20,8	11,7	-43,6
6	19,0	12,9	-32,2
7	17,1	13,3	-22,3
Total	116,0	74,4	-35,9

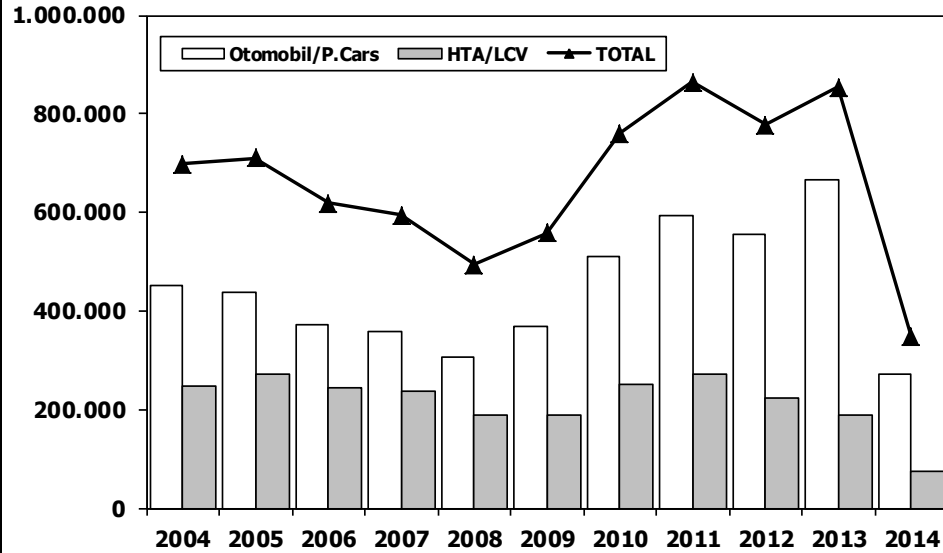
Hafif Ticari Araç Pazarı (x1000)

LCV Total Market (Local + Imports) (x1000)



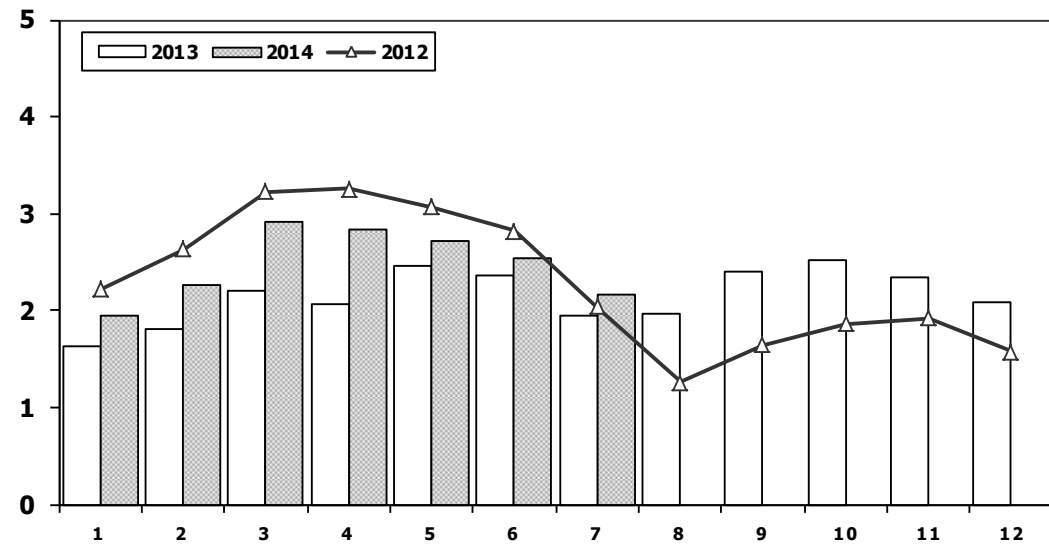
	1	2	3	4	5	6	7	8	9	10	11	12	7 Ay/Mo	Total
2004	10.727	13.384	21.069	25.080	25.680	22.059	21.406	19.167	22.226	18.708	18.653	28.727	139.405	246.886
2005	9.152	14.754	22.578	20.638	28.877	19.896	22.046	25.363	25.544	21.678	23.523	37.762	137.941	271.811
2006	11.411	16.009	23.056	23.861	29.708	21.373	14.598	18.894	18.592	15.305	21.390	30.436	140.016	244.633
2007	9.931	11.972	17.554	17.162	18.871	18.548	19.244	22.089	18.919	20.156	23.670	39.181	113.282	237.297
2008	12.939	14.055	19.502	17.388	17.121	17.600	16.626	17.568	16.879	13.096	9.052	16.199	115.231	188.025
2009	6.433	7.250	14.489	16.438	19.003	20.048	12.208	13.072	29.235	7.205	10.181	31.745	95.869	187.307
2010	7.501	10.521	17.811	18.397	18.910	18.810	19.946	19.542	21.337	25.545	23.901	48.908	111.896	251.129
2011	15.024	19.659	24.380	23.860	24.344	24.859	19.526	19.531	20.165	21.913	18.706	38.953	151.652	270.920
2012	8.468	12.135	17.614	17.304	20.403	20.218	17.773	16.912	20.269	16.498	19.413	34.474	113.915	221.481
2013	9.688	11.493	16.989	16.576	19.085	15.806	15.884	13.432	15.038	11.029	15.184	28.519	105.521	188.723
2014	8.302	7.854	9.769	10.536	11.742	12.885	13.305	0	0	0	0	0	74.393	74.393

Hafif Araç Pazarı (AYA < 3.5 Ton) Light Vehicle Market (GVW < 3.5 Ton)



	2004	2005	2006	2007	2008	2009	2010	2011	2012	2013	2014
Otomobil/P.Cars	451.209	438.597	373.219	357.465	305.998	369.819	509.784	593.519	556.280	664.655	272.375
HTA/LCV	246.886	271.811	244.633	237.297	188.025	187.307	251.129	270.920	221.481	188.723	74.393
TOTAL	698.095	710.408	617.852	594.762	494.023	557.126	760.913	864.439	777.761	853.378	346.768
HTA/LCV (%)	35	38	40	40	38	34	33	31	28	22	21

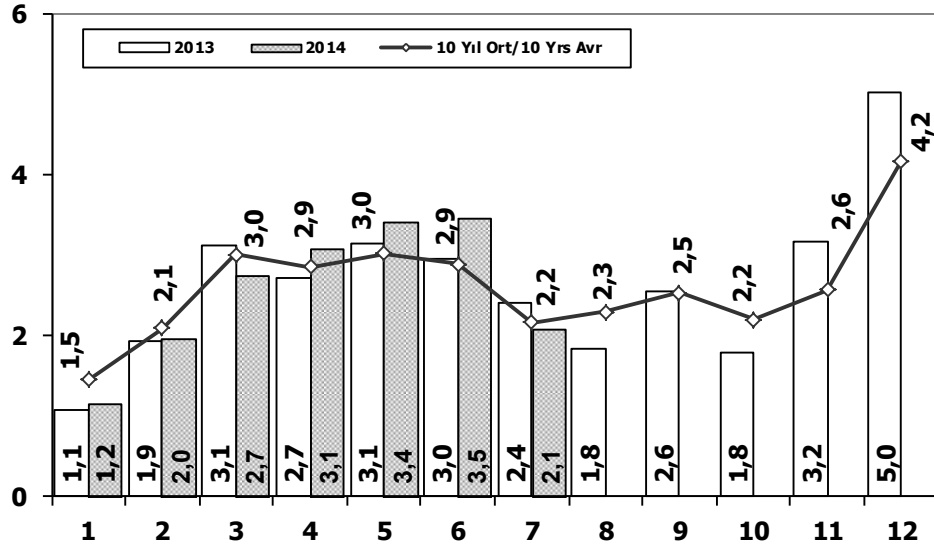
Traktör Pazarı (x1000) F.Tractor Market (x1000)



	1	2	3	4	5	6	7	8	9	10	11	12	7 Ay/Mo	Total
2004	1.946	1.874	2.909	3.260	2.863	2.816	1.988	2.209	2.509	1.989	2.198	1.364	17.656	27.925
2005	1.026	1.636	2.001	2.599	2.569	2.780	2.148	2.819	2.567	2.477	2.297	2.089	14.759	27.008
2006	1.578	2.493	2.746	2.841	3.561	2.356	1.685	2.177	2.756	1.915	2.353	1.925	17.260	28.386
2007	1.812	1.778	2.063	2.107	2.266	1.853	1.653	2.065	2.372	2.239	2.231	1.602	13.532	24.041
2008	1.510	1.427	1.933	1.692	1.689	1.592	1.275	924	904	609	707	359	11.118	14.621
2009	267	344	388	638	759	828	741	534	586	765	725	715	3.965	7.290
2010	714	903	1.432	1.653	1.736	1.673	1.613	1.527	2.351	2.787	2.656	2.345	9.724	21.390
2011	2.458	2.610	3.105	3.403	3.847	3.599	2.952	1.559	2.957	2.823	2.603	2.807	21.974	34.723
2012	2.216	2.632	3.223	3.259	3.067	2.821	2.037	1.262	1.648	1.858	1.921	1.579	19.255	27.523
2013	1.633	1.817	2.196	2.070	2.455	2.370	1.955	1.969	2.396	2.510	2.343	2.080	14.496	25.794
2014	1.941	2.256	2.915	2.837	2.723	2.534	2.171	0	0	0	0	0	17.377	17.377

Kamyon Pazarının Analizi (x1000) AYA > 5 Ton

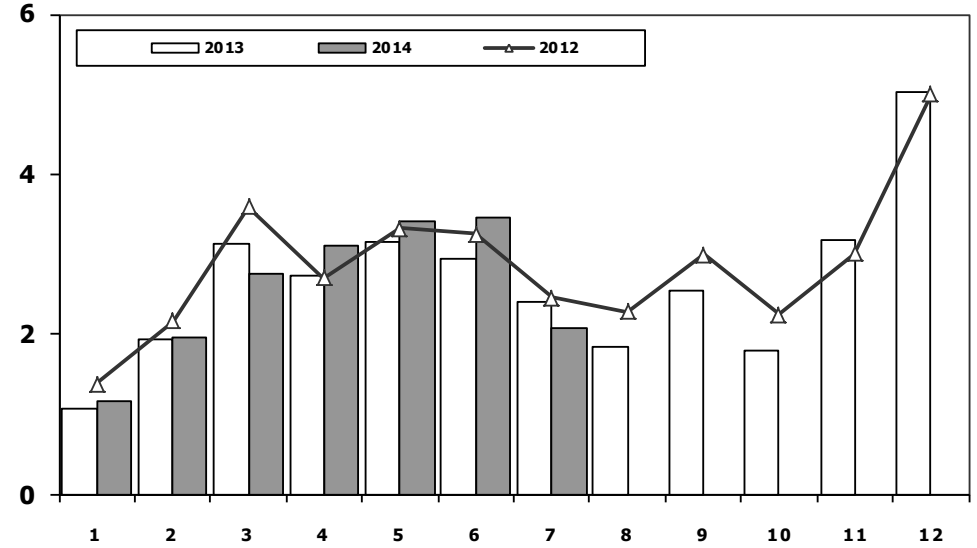
Truck Market Analysis (x1000) GVW > 5 Ton



Aylar / Months	10 Yıl Ort. 10 Yrs Avr. (x1000)	2014 (x100)	%
1	1,5	1,2	-19,8
2	2,1	2,0	-6,0
3	3,0	2,7	-8,8
4	2,9	3,1	8,2
5	3,0	3,4	12,8
6	2,9	3,5	19,4
7	2,2	2,1	-3,6
Total	17,5	17,9	2,4

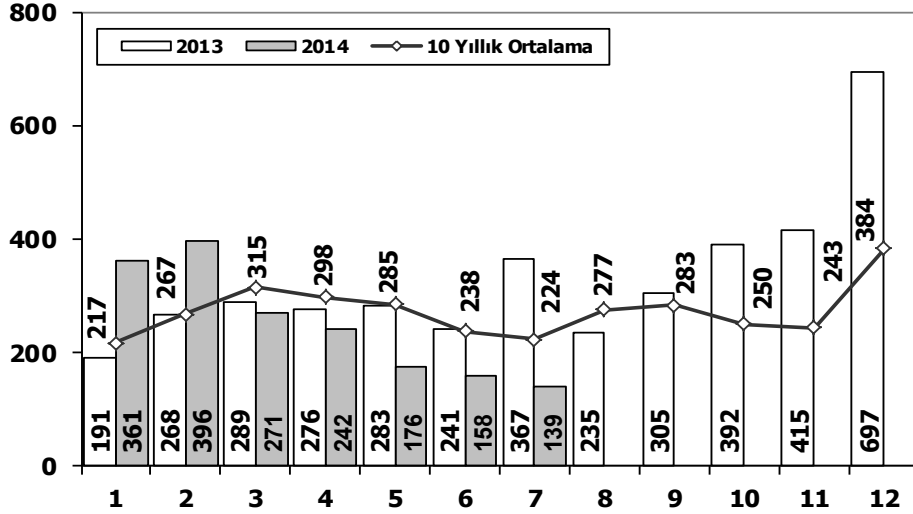
Kamyon Pazarı (x1000) AYA > 5 Ton

Truck Market (x1000) GVW > 5 Ton



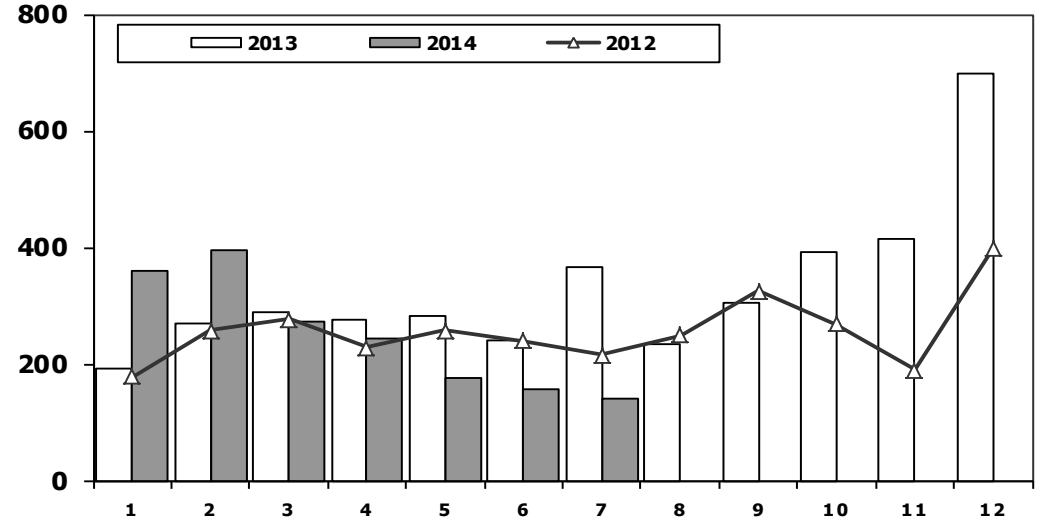
	1	2	3	4	5	6	7	8	9	10	11	12	7 Ay/Mo	Total
2004	1.863	1.949	3.983	3.352	3.651	3.118	2.234	2.897	3.285	2.727	2.629	5.517	20.150	37.205
2005	1.693	2.186	3.288	3.484	3.413	3.147	2.504	4.028	4.043	3.708	3.918	6.570	19.715	41.982
2006	1.767	3.310	4.467	4.180	4.449	3.398	2.472	3.142	3.052	2.926	3.550	5.358	24.043	42.071
2007	1.554	2.055	3.065	2.940	2.865	2.613	2.372	3.145	2.988	2.886	3.258	4.444	17.464	34.185
2008	1.797	2.309	2.621	2.578	2.459	2.526	2.067	2.377	2.390	1.790	1.512	1.834	16.357	26.260
2009	771	759	1.034	1.342	1.355	1.651	1.156	1.205	1.780	866	981	2.015	8.068	14.915
2010	777	968	1.772	1.807	1.966	2.205	2.093	2.446	2.444	3.071	3.136	5.677	11.588	28.362
2011	2.552	3.292	4.418	3.754	3.803	3.749	1.996	2.478	3.081	2.774	3.108	5.787	23.564	40.792
2012	1.375	2.159	3.595	2.697	3.321	3.250	2.450	2.277	2.991	2.244	3.006	5.000	18.847	34.365
2013	1.077	1.931	3.127	2.720	3.145	2.951	2.411	1.845	2.554	1.801	3.173	5.025	17.362	31.760
2014	1.165	1.968	2.749	3.094	3.405	3.457	2.083	0	0	0	0	0	17.921	17.921

Midibüs Pazarının Analizi (7-9 mt / 25-35 Kişilik) Midibus Market Analysis (7-9 mt / 25-35 Passengers)



Aylar / Months	10 Yıl Ort. 10 Yrs Avr.	2014	%
1	217	361	67
2	267	396	48
3	315	271	-14
4	298	242	-19
5	285	176	-38
6	238	158	-34
7	224	139	-38
Total	1.844	1.743	-5

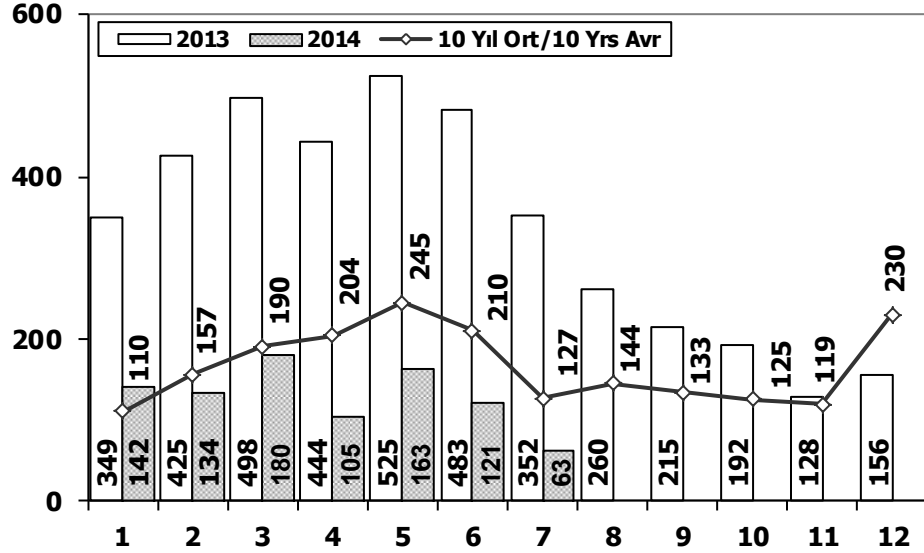
Midibüs Pazarı (7-9 mt / 25-35 Kişilik Midibüs) Midibus Market (7-9 mt / 25-35 Passengers)



	1	2	3	4	5	6	7	8	9	10	11	12	7 Ay/Mo	Total
2004	233	226	381	431	524	237	154	531	445	331	319	551	2.186	4.363
2005	182	258	432	393	439	269	252	459	436	329	328	574	2.225	4.351
2006	207	297	406	388	381	266	230	353	322	253	305	401	2.175	3.809
2007	207	272	404	238	302	283	164	365	399	279	283	465	1.870	3.661
2008	391	476	436	512	419	331	368	380	341	352	246	270	2.933	4.522
2009	154	124	160	220	174	198	160	175	168	143	206	323	1.190	2.205
2010	155	131	185	167	140	138	129	246	236	206	202	437	1.045	2.372
2011	138	195	294	316	280	258	211	305	301	276	260	270	1.692	3.104
2012	179	257	277	229	257	239	216	249	325	269	189	398	1.654	3.084
2013	191	268	289	276	283	241	367	235	305	392	415	697	1.915	3.959
2014	361	396	271	242	176	158	139	0	0	0	0	0	1.743	1.743

Otobüs Pazarının Analizi

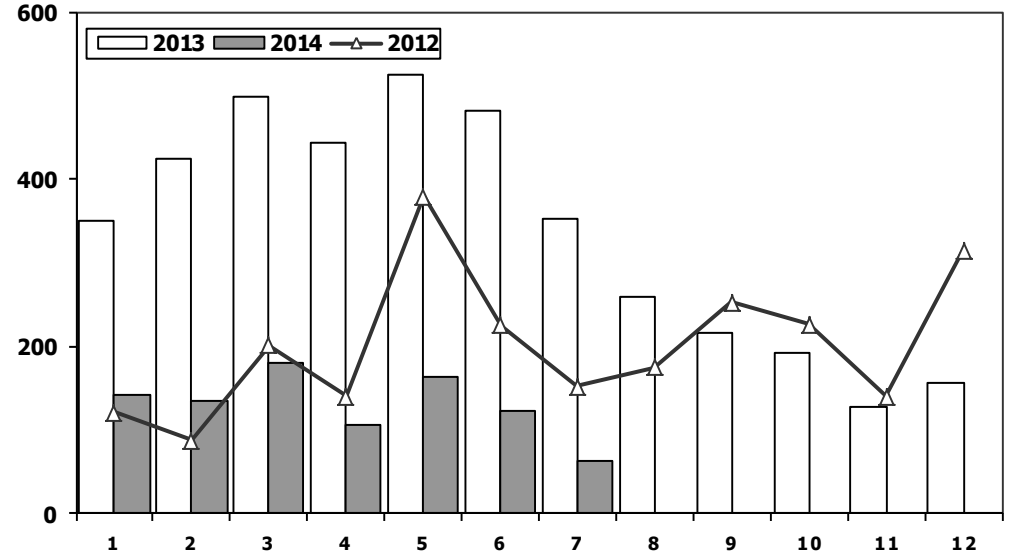
Bus Market Analysis



Aylar / Months	10 Yıl Ort. 10 Yrs Avr.	2014	%
1	110	142	29
2	157	134	-14
3	190	180	-5
4	204	105	-49
5	245	163	-33
6	210	121	-42
7	127	63	-50
Total	1.243	908	-27

Otobüs Pazarı

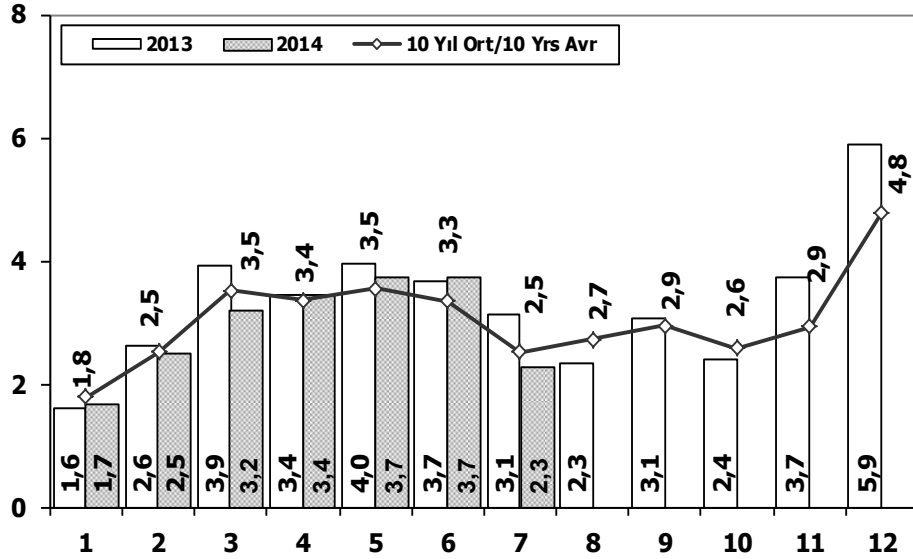
Bus Market



	1	2	3	4	5	6	7	8	9	10	11	12	7 Ay/Mo	Total
2004	173	135	215	198	169	143	103	118	90	95	89	78	1.136	1.606
2005	65	81	75	152	174	167	76	149	147	116	109	485	790	1.796
2006	78	101	165	247	230	184	84	112	146	84	176	176	1.089	1.783
2007	72	191	129	89	150	91	91	103	110	168	163	241	813	1.598
2008	77	85	108	176	151	212	101	165	166	121	141	236	910	1.739
2009	100	221	226	224	167	186	85	103	58	75	53	125	1.209	1.623
2010	23	42	102	159	145	151	151	189	107	99	106	251	773	1.525
2011	76	198	218	306	364	283	113	189	132	169	170	314	1.558	2.532
2012	120	87	201	139	379	225	152	174	252	226	140	315	1.303	2.410
2013	349	425	498	444	525	483	352	260	215	192	128	156	3.076	4.027
2014	142	134	180	105	163	121	63	0	0	0	0	0	908	908

Ağır Ticari Araç Pazarının Analizi (x1000)

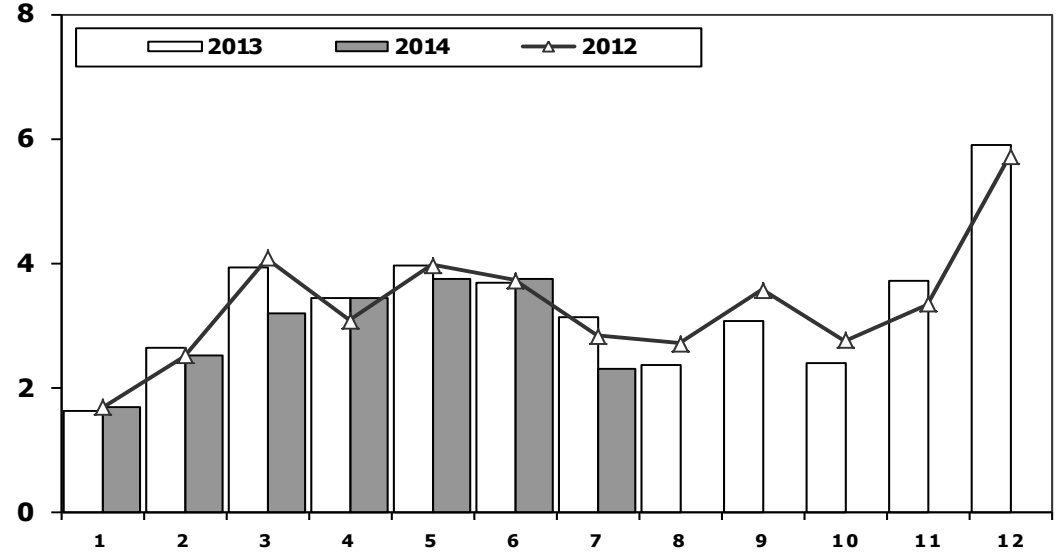
HCV Market Analysis (x1000)



Aylar / Months	10 Yıl Ort. 10 Yrs Avr. (x1000)	2013 (x1000)	%
1	1,8	1,7	-6,3
2	2,5	2,5	-0,8
3	3,5	3,2	-9,1
4	3,4	3,4	2,4
5	3,5	3,7	5,5
6	3,3	3,7	11,8
7	2,5	2,3	-9,0
Total	20,6	20,6	0,0

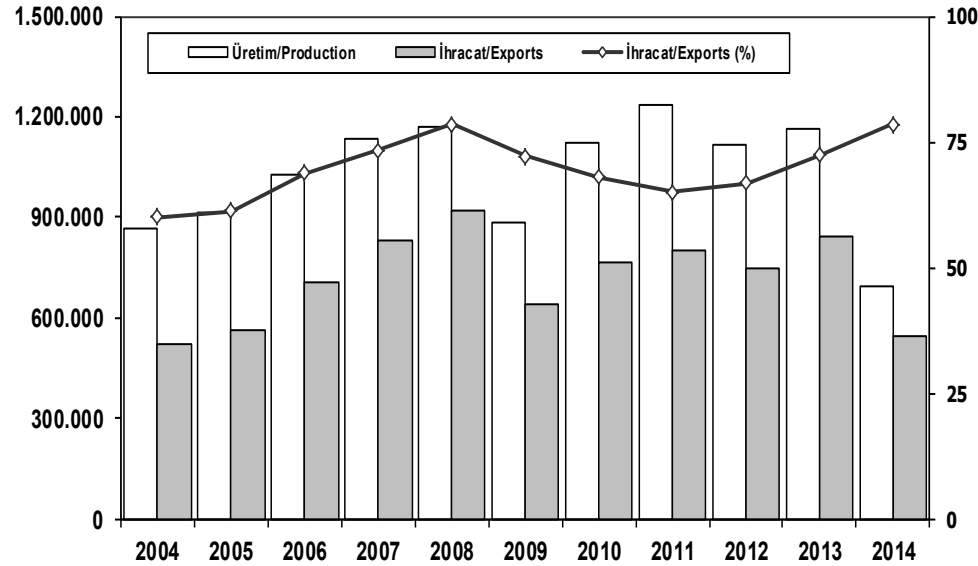
Ağır Ticari Araç Pazarı (x1000)

HCV Market (x1000)



	1	2	3	4	5	6	7	8	9	10	11	12	7 Ay/Mo	Total
2004	2.269	2.310	4.579	3.981	4.344	3.498	2.491	3.546	3.820	3.153	3.037	6.146	23.472	43.174
2005	1.940	2.525	3.795	4.029	4.026	3.583	2.832	4.636	4.626	4.153	4.355	7.629	22.730	48.129
2006	2.052	3.708	5.038	4.815	5.060	3.848	2.786	3.607	3.520	3.263	4.031	5.935	27.307	47.663
2007	1.833	2.518	3.598	3.267	3.317	2.987	2.627	3.613	3.497	3.333	3.704	5.150	20.147	39.444
2008	2.265	2.870	3.165	3.266	3.029	3.069	2.536	2.922	2.897	2.263	1.899	2.340	20.200	32.521
2009	1.025	1.104	1.420	1.786	1.696	2.035	1.401	1.483	2.006	1.084	1.240	2.463	10.467	18.743
2010	955	1.141	2.059	2.133	2.251	2.494	2.373	2.881	2.787	3.376	3.444	6.365	13.406	32.259
2011	2.766	3.685	4.930	4.376	4.447	4.290	2.320	2.972	3.514	3.219	3.538	6.371	26.814	46.428
2012	1.674	2.503	4.073	3.065	3.957	3.714	2.818	2.700	3.568	2.739	3.335	5.713	21.804	39.859
2013	1.617	2.624	3.914	3.440	3.953	3.675	3.130	2.340	3.074	2.385	3.716	5.878	22.353	39.746
2014	1.668	2.498	3.200	3.441	3.744	3.736	2.285	0	0	0	0	0	20.572	20.572

İhracat/Üretim (2004-2014) Exports/Production (2004-2014)



	2004	2005	2006	2007	2008	2009	2010	2011	2012	2013	2014
Üretim/Production	864.073	916.062	1.026.427	1.132.951	1.171.917	884.466	1.124.982	1.234.637	1.115.233	1.166.043	690.911
İhracat/Exports	518.595	561.078	706.402	829.879	920.763	637.855	763.670	801.112	745.354	843.467	541.864
İhracat/Exports (%)	60	61	69	73	79	72	68	65	67	72	78

Taşıt Araçları İhracatı Motor Vehicle Exports

SEKTÖR/SECTOR	2012	2013	2013	2014	2013/2014 (%)
			7 Ay-7 Mo		
OTOMOBİL / P.Cars	412.991	484.504	280.523	352.660	26
TİCARİ ARAÇLAR / CV	316.932	343.967	221.249	179.373	-19
* Kamyonet/Pick-Up	292.601	300.765	196.582	162.196	-17
* Minibüs/Minibus	16.429	34.664	20.893	13.513	-35
* Kamyon/Truck	2.682	3.055	926	684	-26
* Midibüs/Midibus	1.173	985	545	468	-14
* Otobüs/Bus	4.047	4.498	2.303	2.512	9
TAŞIT ARAÇLARI /MV TOTAL	729.923	828.471	501.772	532.033	6
TRAKTÖR/F.TRACTOR	15.431	14.996	8.552	9.831	15
TOTAL	745.354	843.467	510.324	541.864	6

Otomotiv Ana ve Yan Sanayii İhracatı (ABD \$) CBU and CKD Exports - \$

SEKTÖR/SECTOR	2011 Toplam (Total)	2012 Toplam (Total)	2013 Toplam (Total)	2013	2014	2014/2013 (%)
				7 Ay (7 Months)		
Toplam Yan Sanayi/Total Component Industry	6.595.662.583	8.307.826.870	8.223.513.061	5.267.713.164	5.774.901.486	10
İç ve Dış Lastik / Tyres	988.990.821	1.373.205.546	1.200.828.712	661.409.586	710.022.296	7
Emniyet Camı / Safety Glasses	107.203.983	120.041.467	120.710.174	79.737.679	89.010.263	12
Motor (Engine)	305.490.804	273.896.369	272.085.582	195.927.521	106.916.201	-45
Akümülatör / Batteries	186.504.496	232.611.079	250.345.945	163.762.211	150.529.251	-8
Diğer Aksam ve Parça / Spare Parts and Components	5.007.472.478	6.308.072.409	6.379.542.648	4.166.876.166	4.718.423.476	13
Toplam Ana Sanayi/Total Vehicle Industry	10.855.476.447	12.128.522.618	11.101.346.096	7.353.467.485	8.205.459.018	12
Otobüs / Bus	744.935.284	929.372.870	856.072.335	498.222.294	567.303.017	14
Midibüs-Minibüs / Minibus- Minibus	120.378.674	145.199.034	161.806.275	84.132.507	39.755.877	-53
Otomobil (P. Cars)	6.217.404.551	6.541.969.418	6.067.964.588	4.201.211.431	4.603.940.054	10
Kamyon-Kamyonet/HCV-LCV	3.363.101.038	4.034.772.621	3.433.318.136	2.236.518.433	2.595.821.461	16
Çekici/Truck-Tractor	145.710.283	116.912.332	195.260.385	123.821.538	139.821.736	13
Römork ve Yarı Römork/Trailer-Semi Trailer	72.145.150	147.247.613	71.336.635	20.309.210	27.295.890	34
Tarım Traktörü/Farm Tractor	191.801.467	213.048.730	315.587.742	189.252.071	231.520.984	22
Toplam/Total	17.451.139.030	20.436.349.488	19.324.859.157	12.621.180.648	13.980.360.505	11

Kaynak: Otomotiv Endüstrisi İhracatçıları Birliği

Firma Bazında İhracat (Adet)

Export Of member Companies (Unit)

FİRMALAR Companies	2012	2013	Ocak-Temmuz 7 Months	
			2013	2014
OYAK RENAULT	227.162	266.508	170.081	153.627
HYUNDAI ASSAN	67.453	85.500	43.069	103.740
TOFAŞ	154.068	160.309	100.058	88.688
TOYOTA	63.549	86.908	39.104	72.725
FORD OTOSAN	191.149	208.722	137.223	108.877
TÜRK TRAKTÖR	14.572	14.402	8.181	9.125
HONDA TÜRKİYE	7.959	2.121	1.312	1.110
M. BENZ TÜRK	4.054	5.331	2.169	1.856
MAN TÜRKİYE	885	898	512	562
A.I.O.S.	943	770	458	408
HATTAT TARIM	859	594	371	706
TEMSA GLOBAL	856	663	352	179
KARSAN	10.994	10.120	7.180	19
OTOKAR	510	620	253	242
BMC	341	1	1	0
GENEL TOPLAM	745.354	843.466	510.323	541.864

Kaynak: OSD

Sektör Bazında İhracat (\$)

Exports on Sectorial Basis

Sıra No	Sektörler	2013 Toplam	Ocak-Temmuz (January-July)			
			2013	2014	2014/2013 (%)	2014 (%) Pay
1	Otomotiv Endüstrisi *	21.305.104	12.495.339	13.708.978	9,7	14,8
2	Kimyevi Maddeler ve Mamülleri	17.441.095	10.045.985	10.476.355	4,3	11,3
3	Hazırlanmış ve Konfeksiyon	17.372.635	10.035.907	11.159.218	11,2	12,0
4	Çelik	13.835.181	8.510.968	8.075.824	-5,1	8,7
5	İhracatçı Birlikleri Kaydından Muaf İhracat	3.863.979	3.863.979	4.116.812	6,5	4,4
6	Elektrik-Elektronik ve Makina	11.701.483	6.479.999	6.999.309	8,0	7,5
7	Tekstil ve Hammaddeleri	8.391.400	4.835.763	5.225.559	8,1	5,6
8	Demir ve Demir Dışı Metaller	6.834.462	3.971.760	4.240.506	6,8	4,6
9	Hububat, Bakliyat, Yağlı Tohumlar	6.586.158	3.701.510	3.865.926	4,4	4,2
10	Makine ve Aksamları	5.801.972	3.373.623	3.539.343	4,9	3,8
11	Madencilik Ürünleri	5.048.322	2.954.754	2.777.722	-6,0	3,0
12	Ağaç Mamülleri, Orman Ürünleri	4.458.639	2.469.326	2.646.082	7,2	2,9
13	İklimlendirme Sanayi	4.200.542	2.363.128	2.658.398	12,5	2,9
14	Çimento ve Toprak Ürünleri	3.153.737	1.885.521	1.903.926	1,0	2,1
15	Yaş Meyve ve Sebze	2.351.780	1.212.520	1.240.414	2,3	1,3
16	Halı	2.196.240	1.243.214	1.327.542	6,8	1,4
17	Mücevher	2.253.001	1.240.046	1.273.411	2,7	1,4
18	Fındık ve Mamülleri	1.773.286	924.985	1.080.165	16,8	1,2
19	Deri ve Deri Mamülleri	1.901.403	1.029.009	1.052.261	2,3	1,1
20	Su Ürünleri ve Hayvansal Mamuller	1.988.675	1.107.680	1.315.947	18,8	1,4
21	Kuru Meyve ve Mamülleri	1.439.207	737.323	743.732	0,9	0,8
22	Gemi ve Yat	1.163.591	692.716	685.209	-1,1	0,7
23	Savunma Sanayi	1.391.602	780.959	952.667	22,0	1,0
24	Meyve Sebze Mamülleri	1.331.416	707.815	790.402	11,7	0,9
25	Tütün ve Mamülleri	906.813	612.560	596.360	-2,6	0,6
26	Zeytin ve Zeytinyağı	439.743	304.659	144.433	-52,6	0,2
27	Diğer Sanayi Ürünleri	104.661	67.626	69.195	2,3	0,1
28	Süs Bitkileri	77.092	48.458	55.727	15,0	0,1
TOPLAM		149.313.219	87.697.132	92.721.423	5,7	100,0

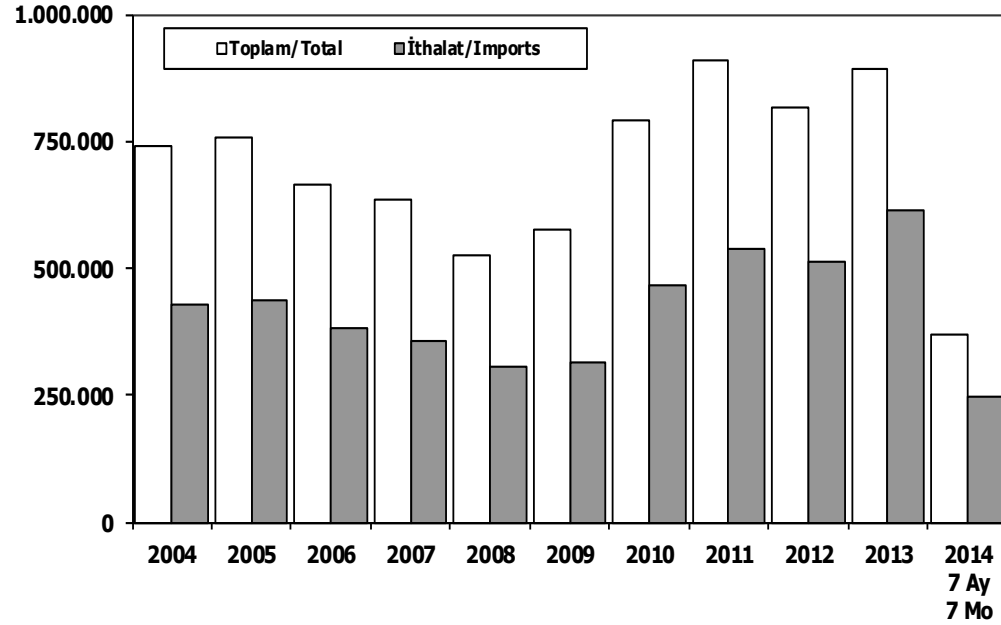
* (Hava, kara, deniz ve demiryolu taşıtları toplamı)

Kaynak: TİM

First 3 Sectors:

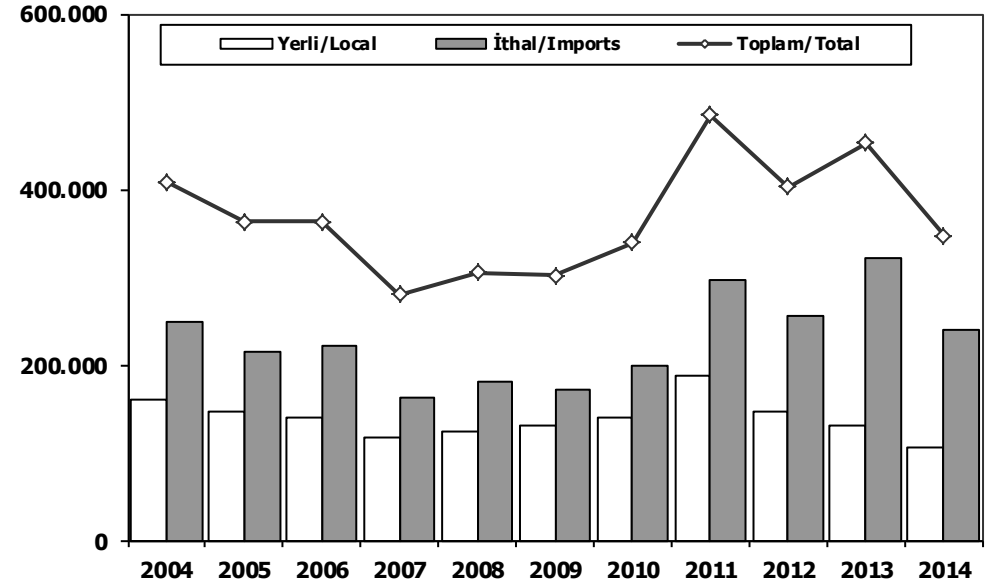
- 1- Transport Vehicle and Component Industry
- 2- Chemical Articles and Products
- 3- Ready Wear and Confection

Toplam Pazar (Otomobil+T.Araç) Total Market (P.Cars+C.V)



	2004	2005	2006	2007	2008	2009	2010	2011	2012	2013	2013 7 Ay 7 Mo	2014 7 Ay 7 Mo
Toplam/Total	741.269	758.537	665.515	634.206	526.544	575.869	793.172	910.867	817.620	893.124	475.692	367.340
İthalat/Imports	430.204	436.033	382.460	355.752	306.087	313.921	465.408	538.532	511.694	615.609	327.356	245.861
İthalat/Imports (%)	58	57	57	56	58	55	59	59	63	69	69	67

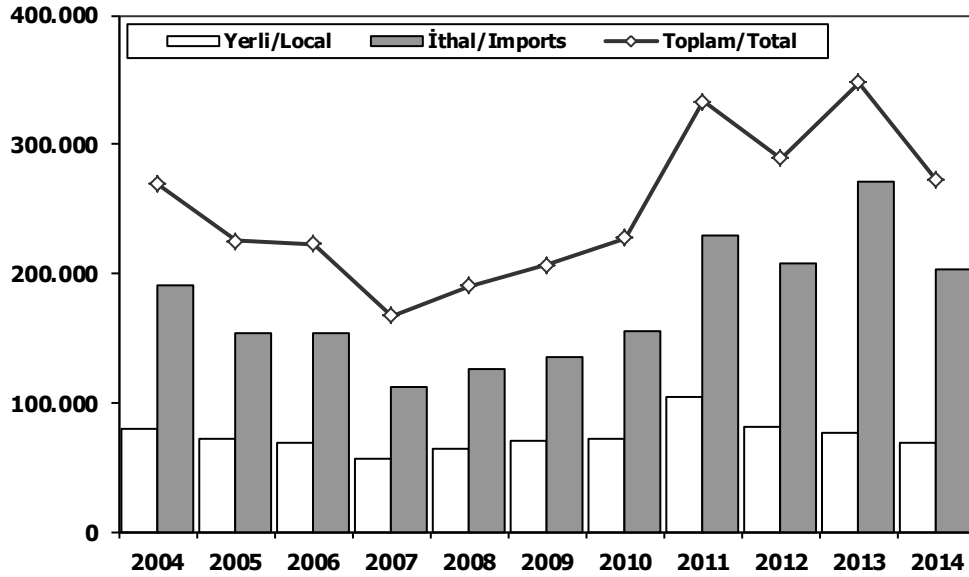
Hafif Araçlar Pazarı (2004-2014 Ocak-Temmuz) LV Market (2004-2014 January-July)



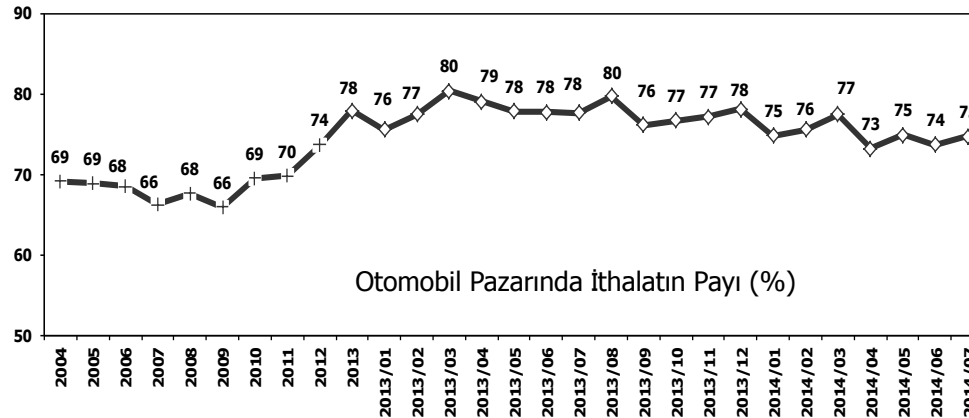
	2004	2005	2006	2007	2008	2009	2010	2011	2012	2013	2014
Yerli/Local	159.219	147.548	140.173	117.358	124.579	130.914	140.328	187.856	146.652	131.242	106.223
İthal/Imports	249.267	215.684	222.607	163.301	180.627	171.288	199.272	297.060	256.284	322.097	240.545
Toplam/Total	408.486	363.232	362.780	280.659	305.206	302.202	339.600	484.916	402.936	453.339	346.768
İthalat/Imports (%)	61	59	61	58	59	57	59	61	64	71	69

Otomobil Pazarı (2004-2014 Ocak-Temmuz)

P.Cars Market (2004-2014 January-July)



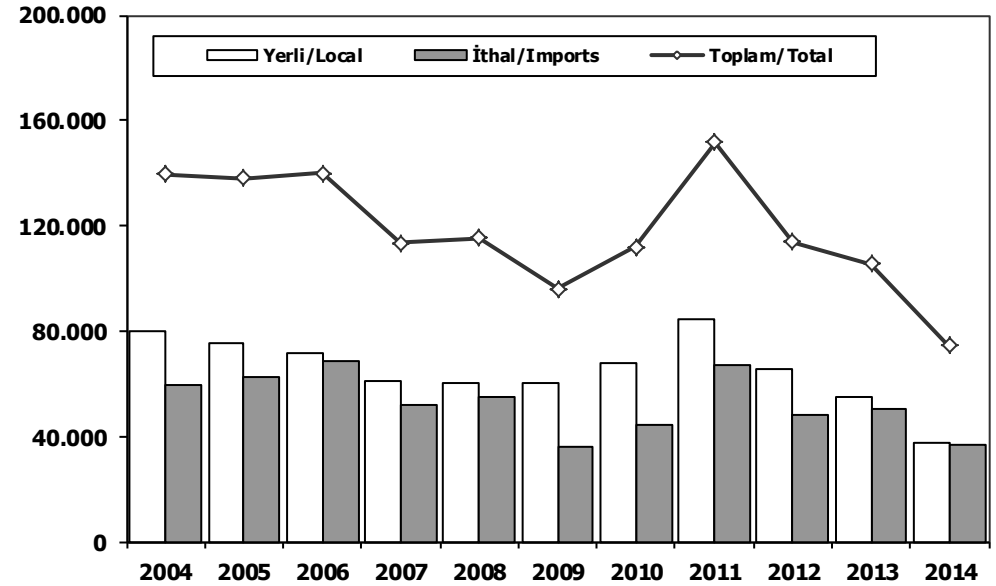
	2004	2005	2006	2007	2008	2009	2010	2011	2012	2013	2014
Yerli/Local	79.090	71.967	68.535	56.142	64.013	70.658	72.553	103.557	80.884	76.152	68.746
İthal/Imports	189.991	153.324	154.229	111.235	125.962	135.675	155.151	229.707	208.137	271.666	203.629
Toplam/Total	269.081	225.291	222.764	167.377	189.975	206.333	227.704	333.264	289.021	347.818	272.375
İthalat/Imports (%)	71	68	69	66	66	66	68	69	72	78	75



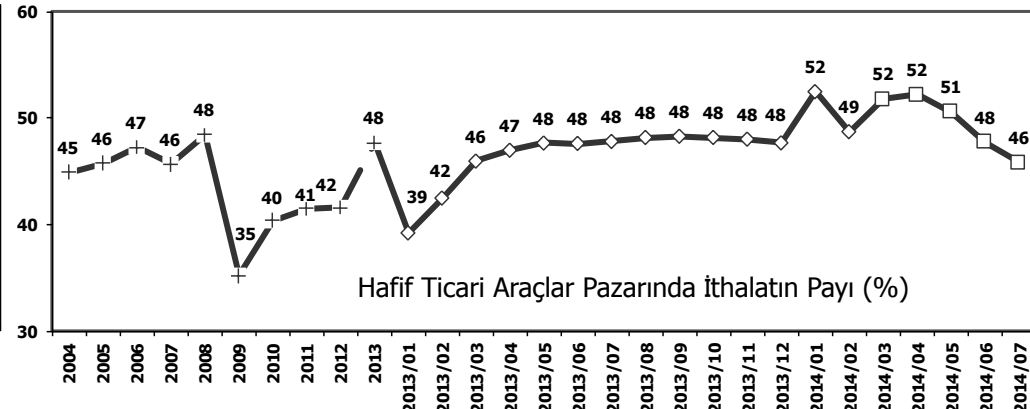
Otomobil Pazarında İthalatın Payı (%)

Hafif Ticari Araçlar Pazarı (2004-2014 Ocak-Temmuz)

Light Commercial Vehicle Market (2004-2014 January-July)



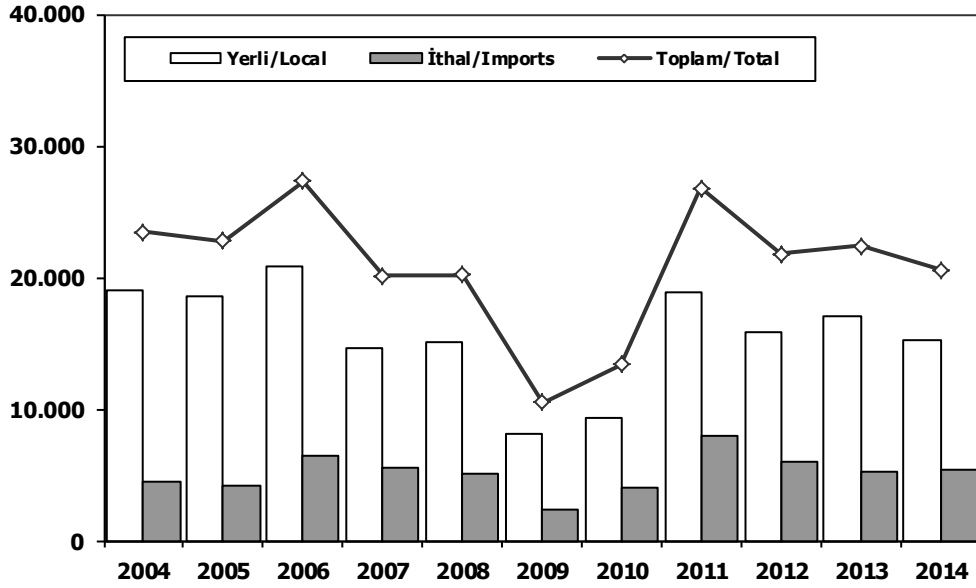
	2004	2005	2006	2007	2008	2009	2010	2011	2012	2013	2014
Yerli/Local	80.129	75.581	71.638	61.216	60.566	60.256	67.775	84.299	65.768	55.090	37.477
İthal/Imports	59.276	62.360	68.378	52.066	54.665	35.613	44.121	67.353	48.147	50.431	36.916
Toplam/Total	139.405	137.941	140.016	113.282	115.231	95.869	111.896	151.652	113.915	105.521	74.393
İthalat/Imports (%)	43	45	49	46	47	37	39	44	42	48	50



Hafif Ticari Araçlar Pazarında İthalatın Payı (%)

Ağır Ticari Araçlar Pazarı (2004-2014 Ocak-Temmuz)

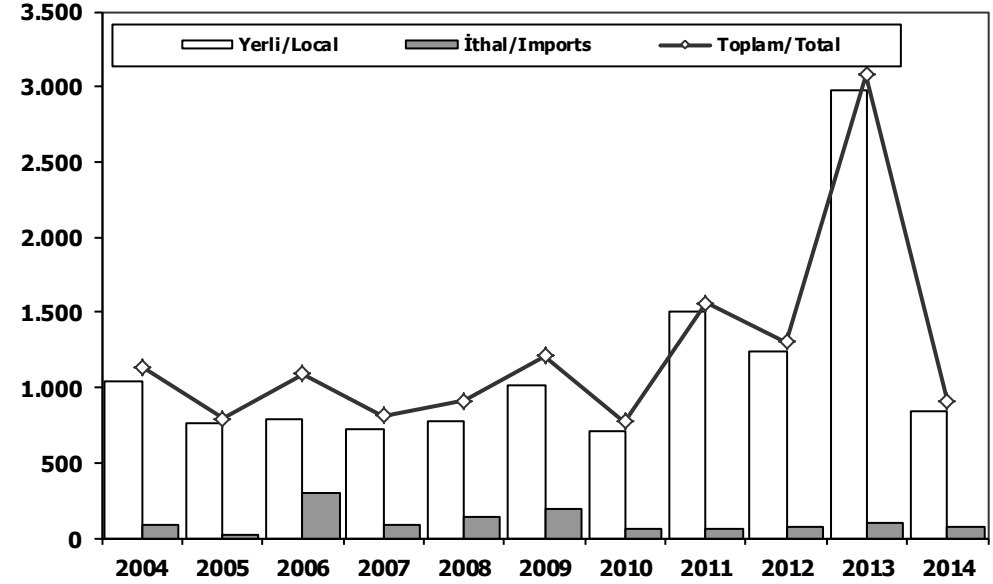
HCV Market (2004-2014 January-July)



	2004	2005	2006	2007	2008	2009	2010	2011	2012	2013	2014
Yerli/Local	19.012	18.525	20.885	14.622	15.075	8.056	9.345	18.834	15.788	17.094	15.256
İthal/Imports	4.460	4.205	6.422	5.525	5.125	2.411	4.061	7.980	6.016	5.259	5.316
Toplam/Total	23.472	22.730	27.307	20.147	20.200	10.467	13.406	26.814	21.804	22.353	20.572
İthalat/Imports (%)	19	18	24	27	25	23	30	30	28	24	26

Otobüs Pazarı (2004-2014 Ocak-Temmuz)

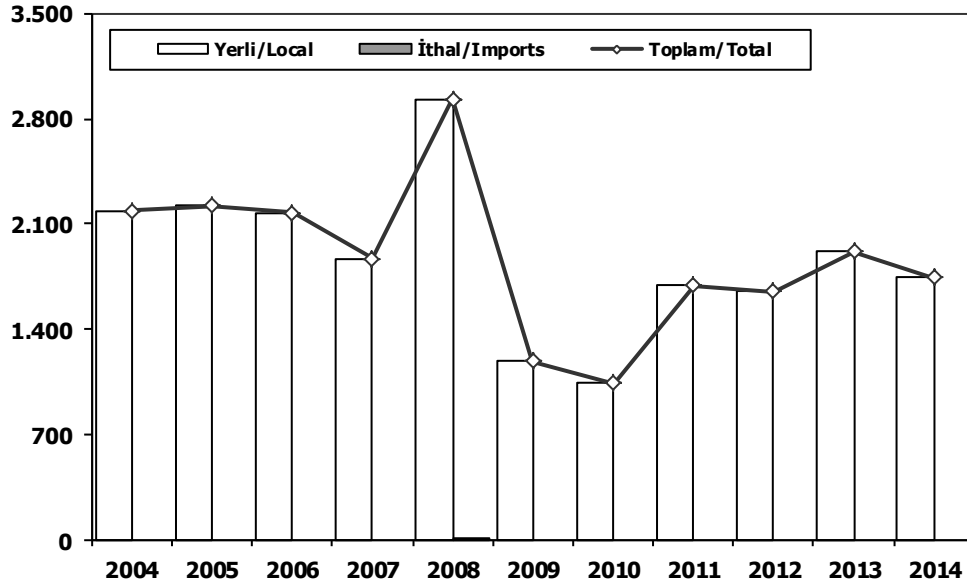
Bus Market (2004-2014 January-July)



	2004	2005	2006	2007	2008	2009	2010	2011	2012	2013	2014
Yerli/Local	1.047	765	792	721	772	1.015	709	1.503	1.234	2.981	838
İthal/Imports	89	25	297	92	138	194	64	55	69	95	70
Toplam/Total	1.136	790	1.089	813	910	1.209	773	1.558	1.303	3.076	908
İthalat/Imports (%)	8	3	27	11	15	16	8	4	5	3	8

Midibüs Pazarı (2004-2014 Ocak-Temmuz) (7-9 mt/25-35 Kişilik)

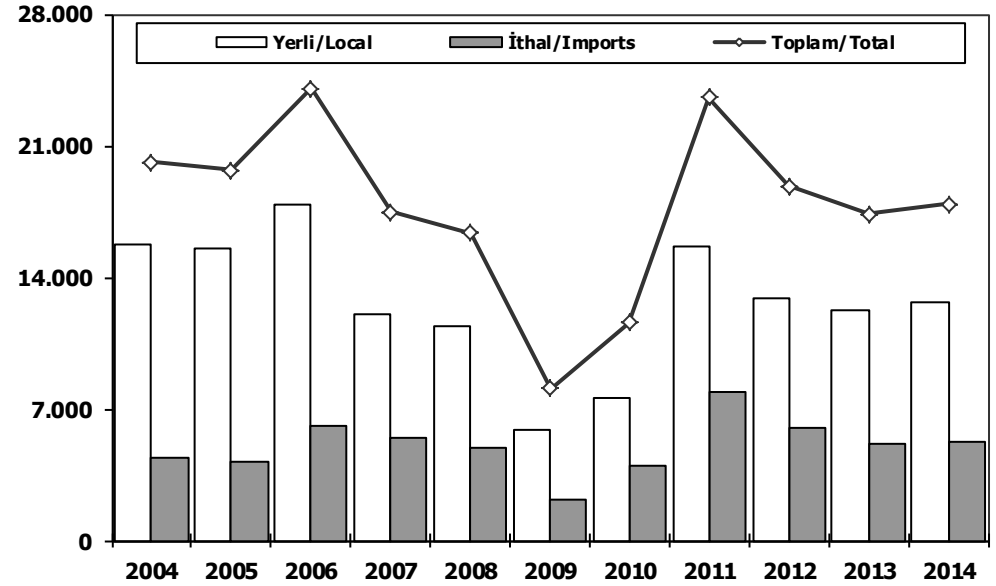
Midibus Market (2004-2014 January-July) (7-9 mt/25-35 Passengers)



	2004	2005	2006	2007	2008	2009	2010	2011	2012	2013	2014
Yerli/Local	2.186	2.225	2.175	1.870	2.922	1.190	1.045	1.692	1.654	1.915	1.743
İthal/Imports	0	0	0	0	11	0	0	0	0	0	0
Toplam/Total	2.186	2.225	2.175	1.870	2.933	1.190	1.045	1.692	1.654	1.915	1.743
İthalat/Imports (%)	0	0	0	0	0	0	0	0	0	0	0

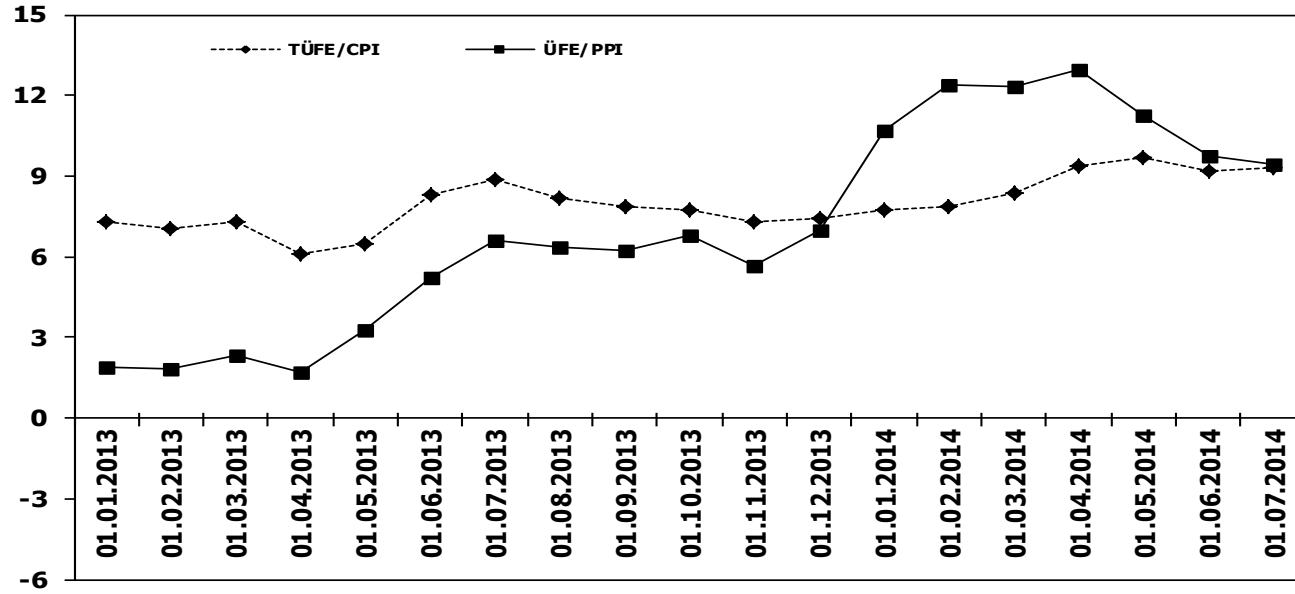
Kamyon Pazarı (2004-2014 Ocak-Temmuz)

Truck Market (2004-2014 January-July)

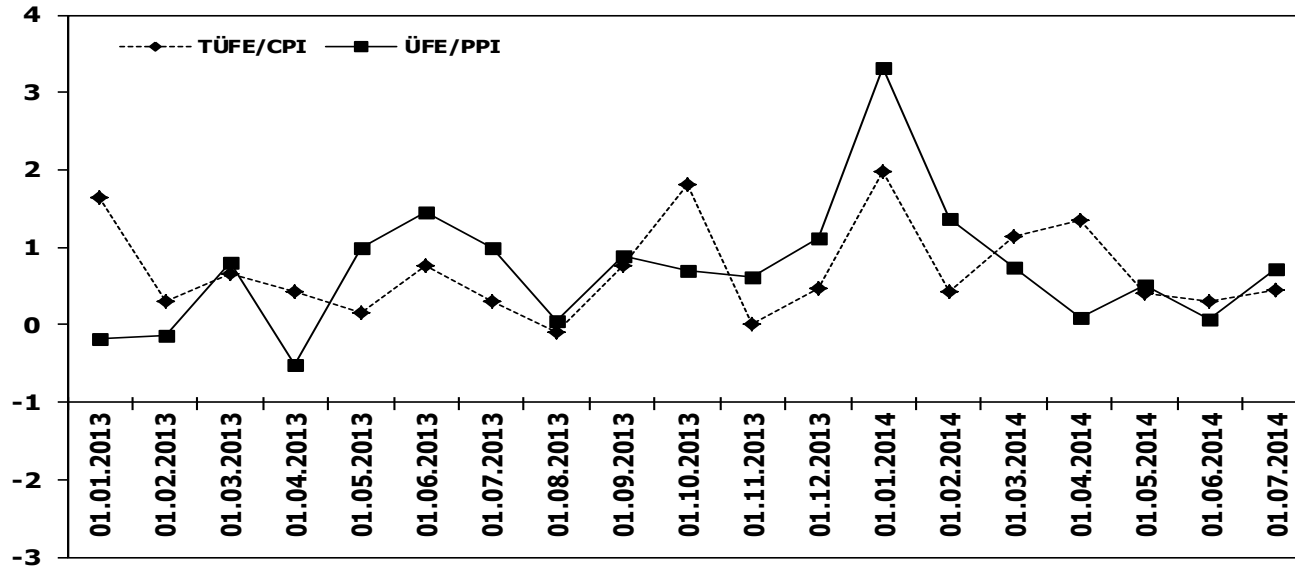


	2004	2005	2006	2007	2008	2009	2010	2011	2012	2013	2014
Yerli/Local	15.779	15.535	17.918	12.031	11.381	5.851	7.591	15.639	12.900	12.198	12.675
İthal/Imports	4.371	4.180	6.125	5.433	4.976	2.217	3.997	7.925	5.947	5.164	5.246
Toplam/Total	20.150	19.715	24.043	17.464	16.357	8.068	11.588	23.564	18.847	17.362	17.921
İthalat/Imports (%)	22	21	25	31	30	27	34	34	32	30	29

TÜFE ve ÜFE'nin Yıllık Değişimi (%) CPI and PPI Yearly Changes (%)



TÜFE ve ÜFE'nin Aylık Değişimi (%) CPI and PPI Monthly Changes (%)



2014 Otomotiv Sanayii Dış Satışlar
2014 Automotive Industry Exports Sales

[illegible]

Otomobil

[illegible]

Kamyonet

[illegible]

Minibüs

FİRMALAR-Companies	Ocak January	Şubat February	Mart March	Nisan April	Mayıs May	Haziran June	Temmuz July	Ağustos August	Eylül September	Ekim October	Kasım November	Aralık December	TOPLAM Total
FORD OTOSAN	1.088	1.617	2.173	2.429	2.387	1.996	1.807	0	0	0	0	0	13.497
KARSAN	0	0	1	0	0	1	4	0	0	0	0	0	6
OTOKAR	0	0	0	0	10	0	0	0	0	0	0	0	10
TOPLAM-Total	1.088	1.617	2.174	2.429	2.397	1.997	1.811	0	0	0	0	0	13.513

Kamyon

FİRMALAR-Companies	Ocak January	Şubat February	Mart March	Nisan April	Mayıs May	Haziran June	Temmuz July	Ağustos August	Eylül September	Ekim October	Kasım November	Aralık December	TOPLAM Total
FORD OTOSAN	32	55	67	53	91	81	93	0	0	0	0	0	472
KARSAN	0	0	0	1	0	0	0	0	0	0	0	0	1
M. BENZ TÜRK	29	39	4	19	31	25	64	0	0	0	0	0	211
TOPLAM-Total	61	94	71	73	122	106	157	0	0	0	0	0	684

Midibüs

[illegible]

Otobüs

[illegible]

Traktör

[illegible]

2014 Yılı İthal Hafif Araç Satışları

2014 Light Vehicles Import Sales

2014 YILI İTHAL OTOMOBİL SATIŞLARI / P.Cars Import 2014

	2013 TOPLAMI 2013 Total	1	2	3	4	5	6	7	8	9	10	11	12	2014 TOPLAMI 2014 Total
VOLKSWAGEN	88.304	4.242	5.080	6.247	7.025	7.193	6.026	7.104	0	0	0	0	0	42.917
OPEL	55.719	1.672	1.374	2.316	2.833	3.346	3.431	2.888	0	0	0	0	0	17.860
RENAULT	32.904	1.719	1.616	2.101	1.842	2.121	1.629	1.719	0	0	0	0	0	12.747
FORD	58.405	1.389	1.244	1.621	2.400	2.866	3.658	4.762	0	0	0	0	0	17.940
DACIA	28.901	1.158	1.229	1.854	1.586	1.883	2.274	2.358	0	0	0	0	0	12.342
NISSAN	18.417	741	1.603	2.355	1.237	1.181	985	1.091	0	0	0	0	0	9.193
HYUNDAI	29.824	882	1.125	1.362	1.675	1.861	1.986	1.720	0	0	0	0	0	10.611
MERCEDES	20.023	582	900	1.783	1.619	2.083	2.512	1.723	0	0	0	0	0	11.202
B. M. W	20.705	334	617	1.875	1.852	1.938	2.076	2.050	0	0	0	0	0	10.742
AUDI	14.987	455	750	1.175	1.391	1.598	1.255	903	0	0	0	0	0	7.527
PEUGEOT	23.068	622	871	1.258	1.208	1.324	1.999	1.104	0	0	0	0	0	8.386
SKODA	12.833	458	632	747	907	1.578	1.200	1.230	0	0	0	0	0	6.752
CITROEN	19.690	657	715	790	1.062	1.040	888	943	0	0	0	0	0	6.095
KIA	13.195	483	462	694	733	775	944	876	0	0	0	0	0	4.967
SEAT	11.065	536	352	524	762	811	959	1.326	0	0	0	0	0	5.270
TOYOTA	22.421	366	363	512	682	647	576	953	0	0	0	0	0	4.099
FIAT	10.913	587	313	306	553	723	718	516	0	0	0	0	0	3.716
VOLVO	5.021	252	256	412	509	525	501	470	0	0	0	0	0	2.925
HONDA	3.394	142	257	285	455	161	105	295	0	0	0	0	0	1.700
CHEVROLET	12.506	206	161	134	29	8	14	14	0	0	0	0	0	566
SUBARU	1.101	120	70	116	91	108	124	68	0	0	0	0	0	697
LAND ROVER	1.323	26	52	142	95	144	94	88	0	0	0	0	0	641
MINI (İngiliz)	1.557	51	51	150	45	73	56	48	0	0	0	0	0	474
SUZUKI	1.623	76	68	98	99	179	115	83	0	0	0	0	0	718
MITSUBISHI	1.488	83	81	53	70	65	62	58	0	0	0	0	0	472
MAZDA	1.377	30	40	69	133	57	170	61	0	0	0	0	0	560
PROTON	715	110	22	24	74	80	50	20	0	0	0	0	0	380
ALFA ROMEO	1.030	60	26	32	44	147	150	110	0	0	0	0	0	569
JEEP	973	31	66	64	71	46	63	45	0	0	0	0	0	386
PORSCHE	517	45	31	27	41	41	41	57	0	0	0	0	0	283
SSANGYONG	972	44	16	38	52	30	57	41	0	0	0	0	0	278
LANCIA	782	8	31	44	69	17	18	3	0	0	0	0	0	190
CHERY	492	17	16	34	34	53	35	12	0	0	0	0	0	201
GEELY	623	12	5	9	8	3	10	10	0	0	0	0	0	57
MASERATI	40	6	8	9	4	5	4	3	0	0	0	0	0	39
SMART	110	4	5	8	8	5	8	7	0	0	0	0	0	45
JAGUAR	97	0	8	3	5	2	8	4	0	0	0	0	0	30
FERRARI	23	0	3	2	0	2	0	0	0	0	0	0	0	7
BENTLEY	21	0	2	1	0	2	1	2	0	0	0	0	0	8
INFINITI	37	1	0	1	0	1	0	0	0	0	0	0	0	3
LAMBORGHINI	4	0	1	0	0	0	0	0	0	0	0	0	0	1
TATA	326	1	0	0	0	0	17	15	0	0	0	0	0	33
TOPLAM	517.526	18.208	20.522	29.275	31.303	34.722	34.819	34.780	0	0	0	0	0	203.629

2014 YILI İTHAL HAFİF TİCARİ ARAÇ SATIŞLARI / Light Commercial Vehicles Import 2014

	2013 TOPLAMI 2013 Total	1	2	3	4	5	6	7	8	9	10	11	12	2014 TOPLAMI 2014 Total
VOLKSWAGEN	23.752	1.152	1.144	1.365	1.779	1.956	2.004	1.975	0	0	0	0	0	11.375
RENAULT	11.550	565	431	556	484	613	666	640	0	0	0	0	0	3.955
MERCEDES	10.421	490	389	712	456	493	658	479	0	0	0	0	0	3.677
FIAT	6.245	397	455	414	557	514	424	414	0	0	0	0	0	3.175
DACIA	7.494	510	400	315	340	427	409	440	0	0	0	0	0	2.841
CITROEN	6.679	234	103	318	386	448	666	661	0	0	0	0	0	2.816
PEUGEOT	8.323	78	105	249	445	539	438	361	0	0	0	0	0	2.215
MITSUBISHI	3.592	229	180	201	266	196	168	297	0	0	0	0	0	1.537
ISUZU	2.587	228	138	174	177	190	123	212	0	0	0	0	0	1.242
TOYOTA	2.413	139	105	349	116	66	83	94	0	0	0	0	0	952
IVECO	2.204	77	127	212	181	168	189	138	0	0	0	0	0	1.092
HYUNDAI	1.480	117	86	73	117	126	67	149	0	0	0	0	0	735
KIA	453	47	44	62	102	114	158	102	0	0	0	0	0	629
SSANGYONG	859	63	55	11	33	31	43	64	0	0	0	0	0	300
TATA	316	20	34	16	29	27	16	25	0	0	0	0	0	167
NISSAN	878	9	2	20	13	20	19	9	0	0	0	0	0	92
FORD	657	1	23	12	16	7	14	34	0	0	0	0	0	107
MAZDA	3	0	5	0	0	3	1	0	0	0	0	0	0	9
TOPLAM	89.906	4.356	3.826	5.059	5.497	5.938	6.146	6.094	0	0	0	0	0	36.916